

ADULT SCHOOL REGISTRATION TONIGHT

The Belleville Times

News

OVER
24,000
READERS

51ST YEAR, NO. 7

Entered as second class matter, May 22, 1920, at the Post Office at Newark, N. J., under the act of March 3, 1879

BELLEVILLE, N. J., THURSDAY, FEBRUARY 16, 1961

Telephone PLYMOUTH 9-3200

\$3 Per Year 10c Per Copy

Mayor Says: 'In Good Shape'

Town Tax Rate Going Up Another 43 Points to \$8.64; Hearing Set for March 14

Belleville's new tax rate will be \$8.64, up from \$8.21, according to speculation by Mayor Isadore J. Padula this week. Padula told a caucus of the board of commissioners Tuesday night that Belleville will have a tax jump of 43 points this year, "or maybe only 42." He said the town will require 17 additional points, the county will get 17 and the Belleville Board of Education will receive nine additional points for its budget.

Public hearing on the municipal budget, introduced Tuesday, has been scheduled for March 14. The budget will be published in this newspaper on Thursday, March 2. Mayor Padula told the commissioners he regards the \$8.64 tax rate as "very good"

when compared to other Essex County towns. "We're in good shape," Mayor Padula said.

OTHER NOTES

Other highlights of Tuesday's commission meeting included the lack of an announcement by Town Clerk Eugene Barnett concerning the election date for a government change referendum, the appropriation of more than \$30,000 for snow removal operations and the postponement of a controversial sub-division ordinance.

Barnett told The Belleville Times Tuesday night "things have to be worked out with the county board of elections" before he can announce the date of a special referendum on changing Belleville's form of government to a council-manager type. The

referendum is the result of a petition circulated by the Citizens Tax Council and presented to Barnett over a month ago. Barnett says he has no idea when he will announce the date of the election which will be scheduled for May.

Recent snow storms prompted the introduction and passage of emergency appropriations of more than \$30,000 for snow removal operations. All but \$5,500 is going to Commissioner Robert Gruhn's public works department. The \$5,500 is for Commissioner Harry Sullivan's public safety department for the removal of snow around fire hydrants.

A sub-division ordinance drawn up by the Belleville Planning Board, was postponed from introduction. The commissioners will meet with the planning board before the next town meeting set for February 28. Gruhn is opposed to the introduction of the sub-division ordinance "until we learn what the hired planning consultants want to do." Gruhn also said "Belleville has no need for a major sub-division ordinance." He noted the only tract undeveloped is the Essex County Golf Course.

Commissioners granted the local chapter of Deborah Hospital, permission to conduct a tag day on May 3, 4 and 5.

A petition asking that Naples Avenue be converted into a one-way street was received favorably Tuesday. Public Safety Director Sullivan noted "one way streets are the pattern in that area."

PTA Nine to Show School Board Film

A film and a talk by Dr. Felix McCormick, educational consultant, will highlight next Tuesday's meeting of PTA at school nine. Dr. McCormick is the consultant to the Belleville Board of Education on the proposed new high school plans. The film is called "To Be or Not To Be" and relates the story of the high school. The motion picture was prepared by the Belleville board to win approval of the public toward the project.

Elect Arthur Pico, Richard Drake To Three Year School Board Terms

List Returns At All Polls On Tuesday

(Listed below, by voting places is the result of Tuesday's balloting in the Belleville school election. District and ward identification is given in the brackets following each polling location.

SCHOOL ONE

(Ward 1, Districts 1 and 2);
Drake 91, Garson 52, Pico 63,
Rochau 86; budget, 9 yes, 46 no.

SCHOOL NINE

(Ward 1, District 3);
Drake 116, Garson 72, Pico 96,
Rochau 112; budget, 100 yes, 68 no.

HIGH SCHOOL

(Ward 2, Districts 1, 2 and 5);
Drake 208, Garson 130, Pico 161,
Rochau 181; budget, 153 yes, 141 no.

SCHOOL EIGHT

(Ward 2, Districts 3, 4 and 6);
Drake 254, Garson 171, Pico 209,
Rochau 229; budget 214 yes, 152 no.

SCHOOL THREE

(Ward 3, Districts 1, 2 and 4);
Drake 433, Garson 248, Pico 297,
Rochau 385; budget, 318 yes, 240 no.

SCHOOL FIVE

(Ward 3, Districts 3, 5 and 6);
Drake 385, Garson 321, Pico 374,
Rochau 321; budget, 286 yes, 325 no.

SCHOOL FOUR

(Ward 4, Districts 1 and 3);
Drake 112, Garson 180, Pico 169,
Rochau 118; budget, 113 yes, 303 no.

SCHOOL SEVEN

(Ward 4, Districts 4 and 6);
Drake 335, Garson 407, Pico 479,
Rochau 323; budget, 249 yes, 335 no.

SCHOOL TWO

(Ward 4, District 2);
Drake 70, Garson 73, Pico 106,
Rochau 74; budget 50 yes, 79 no.

SCHOOL TEN

(Ward 4, District 5);
Drake 229, Garson 106, Pico 229,
Rochau 106; budget, 106 yes, 106 no.

(Continued On Page 11)



WINNING CANDIDATES: Successful candidates are pictured here with their wives as they receive the good news of their victories in Tuesday's school board election. In the left photo are Mr. and Mrs. Richard H. Drake while, at right, Mr. and Mrs. Arthur M. Pico survey a note of confirmation of his election to the Belleville Board of Education.

But Budget Goes Down By 74 Votes

Belleville's school board will reorganize itself Monday at 8 p.m. with Arthur M. Pico as its newest member. Pico drew the largest number of votes Tuesday when he and Richard H. Drake, an incumbent, were elected to three-year terms on the board. One of the first problems of the new board will be another election on a school budget. Town voters knocked down the \$2,738, 315 school budget Tuesday and another election will be scheduled within the next two weeks.

Final tallies of Tuesday's election were as follows: Monday at 8 p.m., Drake, 2,235; Mrs. Violet F. Rochau, 2,243; and Les H. Garson, 1,760. The school budget went down by a 1,708 to 1,634 margin.

REACTION

Throughout the campaign, the issue of a new high school has been a key topic and it had been generally conceded that Tuesday's election would be a barometer for another election set for May on the proposed high school question.

Pico has been opposed to a new high school while Drake has given the project his wholehearted support. But Mrs. Rochau, who shared with Drake a supporting role toward the new school, and Garson, who opposed the project with Pico, both lost. Garson also had the support of the Citizens' Tax Council, a group whose efforts in opposing the school budget seemed to have produced results.

Pico racked up his biggest advantage at School Four in the Silver Lake section of Belleville. The budget suffered its biggest defeat in Silver Lake, 303 to 113. However Pico also ran strong in other sections of town, particularly School Seven, the Rutan Estates area. Pico did remarkably well in the School Five area, a stronghold of the Alerte Belleville Citizens group (ABC); School Five gave Pico 374 votes and he trailed Drake's 387 but an ahead of 321 tallies polled for both Garson and Rochau.

The ABC backed the re-election of Drake and Mrs. Rochau. Mrs. Rochau's defeat marked the end of eight years' service on the board of education, the last which she served as its president. Drake served as vice-president during the past year and is seen as the probable choice as president when the board reorganizes next Monday night. A total of 4,483 persons voted Tuesday.

Pendlebury Wins \$10 in Map Game

For the second week in a row, the map game is worth \$20 in prizes. The lucky person whose picture is circled in today's mystery photograph will receive \$15 and the first person to correctly state the name of the mystery personality and the spot the photograph was taken in will receive \$5.

J. L. Pendlebury of 51 Park View Ave. collected \$10 in prizes from last week's contest after he correctly named Mrs. Philip Gumsheimer the mystery personality. Pendlebury also correctly stated that the picture was snapped in Louises Men's Shop at 137 1/2 Washington Avenue.

Mrs. Gumsheimer recently moved to Lincoln Park 700 N. Main Street, Belleville. She did not present herself at The Times office so the portion of the money which usually goes to the mystery personality accumulates and amounts to \$15 for today's game.

Participating sponsor of last week's contest was Zimicola's Bakery, Nutley. Today's contest sponsor is DiBella Men's Shop, 155 Washington Avenue.

Contest rules are listed in last week's issue of The Belleville Times.

Arvidson Would Censure Critic If Attacks Persist

If Dr. Frank W. DiRuggiero alleges regarding the school board's activity, I will introduce a motion of censure."

Arvidson and DiRuggiero clashed several times during the special board session. Early in the evening when DiRuggiero began objecting to the phrase in the resolution, "the board shall take such action as it deems necessary or proper under the circumstances," Arvidson said DiRuggiero's complaint "is only an attempt to evade the real issue."

Some school board officials say DiRuggiero came close to being censured Wednesday night at a special session called to direct DiRuggiero "to divulge... information and data (concerning) the school architect." The resolution concluded with the stipulation that if DiRuggiero did not comply with the directive, "the board shall take such action as it deems necessary or proper under the circumstances."

Dr. DiRuggiero Reports To Board 'Under Protest'

Dr. Frank W. DiRuggiero says Alvarez has worked. All the letters praised highly the work of the Montclair architect. DiRuggiero said he has fulfilled his intended purpose of "bringing into the open" the somewhat controversial policies in the professional background of architect Alfonso Alvarez.

School board members met in special session Wednesday night to direct Dr. DiRuggiero "to divulge to the board all information and data within his knowledge or possession, including the sources of such information" which concerned Mr. Alvarez.

Although DiRuggiero objected to the board's demand, he submitted "under protest" several newspaper clippings indicating that Alvarez had run into difficulties during work on school projects.

However either Dr. Felix McCormick, the board's educational consultant, or Evan Thomas, superintendent of schools, provided clarifications to all the doubts raised by Dr. DiRuggiero Wednesday night. These included suggested improprieties in E. A. S. Peterson, Clifton and Manville. Dr. DiRuggiero reported he had spent several days investigating rumors in these towns; he came armed with newspapers and a d. d. clippings to the meeting Wednesday night.

In answer to DiRuggiero's suggestions of irregularities on Alvarez's part, Thomas released copies of five letters he solicited from the superintendents of schools in municipalities where

Nurses' Course Opens Feb. 28

Essex County Medical Society again will sponsor a refresher course for graduate and registered nurses in cooperation with the Clara Mass Memorial Hospital, Belleville. The course, being offered for the fourth consecutive year, will open Tuesday, February 28 and continue in a series of 10 two-hour sessions each Tuesday at the hospital. The classes will start at 8 p.m.

Registration fee for the course is \$10 and all persons interested should register promptly at the hospital. Since all previous refresher courses in past years have been oversubscribed well in advance of the starting date, it's suggested all nurses interested register at once.

Lectures have been arranged by Dr. Robert C. Anderson, chairman of the nursing and nursing education committee of the Essex County Medical Society. The talks are planned in accordance with the society's policy of serving the needs of special groups, as well as the interests of the general public.

The course will deal with up (Continued On Page 11)

Adult School Registration Tonight and Next Monday

James McCommon, president of the Belleville Adult School, has announced registration for the spring term will be held tonight and next Monday between 7:30 and 9 p.m. in Belleville High School. The new term will open Tuesday, February 21 and continues through May 2 with a week's holiday starting April 4 for the Easter holiday.

A total of 28 different classes are being offered covering a variety of 21 topics. Fees range from \$5.00 for a course for prospective parents to \$20 for the driver education classes.

Other topics include Americanization and English for new Americans, ballroom dancing, mathematics, contract bridge, golf, Italian, public speaking, oil painting, organ and guitar lessons, securities and investing, sewing, shorthand, making slip covers, sports night for women, swimming, tennis and woodwork.

Seymour Grossman, director of Belleville adult education, reports a brochure describing the offerings of the school has been prepared. He said that in addition to tonight and next Monday's registration hours, persons may register any school day during regular hours at the high school.

Grossman said those wishing a brochure may call Plymouth 9-4701 or Plymouth 9-1672 during the day. He noted that most homes in town already have been mailed a copy of the brochure.

The Belleville Adult School operates under the town school board. Ernest Arvidson is the board of education representative to the adult school program.

Unico to Award Bond To Top Italian Student

A \$25 U. S. government bond will be awarded yearly to "the outstanding student in the study of the Italian language" at a Belleville-High School, the Belleville Chapter of Unico announced today.

The award, to be known as "The Unico Italian Award Medal," will be presented annually by the local club, Joseph Miele reports.

Chamber Dinner Host to 150 Guests



NEW CHAMBERS DIRECTORS: Dignitaries at the Chamber of Commerce dinner at The Galaxy included, seated (l-r) Arthur Jackson, president; Comm. Harry J. Sullivan; State Sen. Donald C. Fox, Frank Orechio, chairman of the board, and standing (l-r) Harry T. French, executive director; Clayton Sheperd, Albin Obert, Robert Williams and Michael Pariso, vice presidents.

Chamber Dinner Host to 150 Guests



NEW CHAMBERS DIRECTORS: Dignitaries at the Chamber of Commerce dinner at The Galaxy included, seated (l-r) Arthur Jackson, president; Comm. Harry J. Sullivan; State Sen. Donald C. Fox, Frank Orechio, chairman of the board, and standing (l-r) Harry T. French, executive director; Clayton Sheperd, Albin Obert, Robert Williams and Michael Pariso, vice presidents.

Buy Or Sell Real Estate
With Confidence Through
A Realtor-Adv.

Asks Support For Fund

Belleville Health Officer Edward Burdy urges all citizens to give support to the 1961 Health Fund campaign, which closes this Sunday.

Buy Or Sell Real Estate
With Confidence Through
A Realtor-Adv.

Health Department Expansion Asked By 'Investigators'

Promote Burdzy to Health Officer; See Hiring of Two Sanitarians

New minimum health standards set by the state and which become law throughout New Jersey municipalities April 1 already are having an effect on the Belleville Health Department.

A Citizens' Committee headed by Dr. Melvin Freundlich of the Louise Court is surveying the Belleville department with the aim of providing the state with information to enforce its new standards in the town. One recommendation the committee expects to make is the request that the department be enlarged by two members.

A number of other developments in the past few weeks have already taken place within the health office. First of all Edward Burdzy has been promoted from sanitarian to the fully-licensed health officer for the town. Burdzy's promotion marks the first time in two and a half years that the town has had a licensed health officer.

Dr. Martin M. Meehan, town physician, who had been performing some of the functions of the health officer's post, will continue receiving his \$6,000 annual salary, according to Commissioner Nuncio Pico, director of the department. However Dr. Meehan will be transferred to the municipal baby keep-well station.

The baby station was formerly financed by the state; however New Jersey recently discontinued its financial aid to municipal baby stations.

Burdzy will receive a salary hike of \$300 to \$6,500 in his new capacity. He passed the New Jersey state examination for licensed health officers last month.

Another major change in the Belleville Health Department came January 1 when the office assumed the responsibilities of the Dental Clinic abandoned by the Belleville Foundation. The Foundation founded the clinic 11 years ago and had financed its operation up to January 1, 1961 when the town took over the service.

No one has yet been named to fill Burdzy's vacancy of the sanitarian's post. Pico however has stated that the position "requires urgent action." He reminded reporters of the Citizens' Health Committee's survey of the department.

Attorney Nicholas Brescia, secretary of the Citizens' Health

Seal Campaign Short of Goal

Belleville - Nutley Tuberculosis Association has received \$8,482.45 in its drive for funds needed to carry on its tuberculosis prevention and control program in the two communities, according to Edward G. Burdzy, Belleville Seal Sale chairman.

Since the amount is short of the \$12,000 goal needed to conduct the complete program of service in Belleville and Nutley, "we will be able to provide these services only insofar as the funds available permit," Burdzy stated.

However, the chairman added, "it is not too late for contributions and to appeal to the townspeople who received the association's Christmas Seals and have not yet sent in their contributions, to do so at their earliest convenience."

Burdzy also expressed his thanks and appreciation to all of the people of Belleville who responded to the association's Seal Sale campaign.

OLYMPIC BOWL

**NOW OPEN
NEW MODERN
BILLIARD ROOM**

OPEN BOWLING SCHEDULE

Monday All Day - Wednesday All Day

Thursday All Day - Friday Until 9 P.M.

Also All Day Saturday and Sunday


679 Washington Ave., Belleville Phone PL 1-2111

Belleville Gives Support to Fox

Sen. Donald C. Fox is being endorsed as the Democratic candidate for governor by the Belleville Democratic Club. Ralph V. Varva, Belleville party chairman said the club unanimously adopted a resolution supporting the Essex County senator for the nomination.

Gus Gausepohl, Bloomfield Democratic Town Chairman, was the club's guest speaker at its February 6 meeting. Another highlight of the session was the presentation of a gold chain bracelet to outgoing president, Miss Adele Madis.

NORFOLK



3 min station rate from Newark after 6 P.M. 10¢ tax not included.

CAPITOL CAB CO.

19 Davidson St.
Belleville

PL 9-3900

6 A.M. to 12 P.M.

AGAIN

**De Witt's
savers will earn
HIGHER
DIVIDENDS!
EXTRA**


**1%
2%
per annum**

anticipated for dividend period beginning January 1, 1961.

ADDED TO OUR REGULAR DIVIDEND OF **3 1/2%
per annum**

Here's evidence indeed that it pays to save at De Witt. Once again — for the second consecutive dividend period — De Witt's Directors have approved this dividend "extra". De Witt's savers now enjoy an even higher return, completely fluctuation - proof, their savings always worth 100¢ on the dollar. Why not join them today?

\$1 opens on account, in person or by mail. We pay all postage.



**Strumolo to Install
New Officers Sunday**

Frank Tremarco will be installed as president of the Vincent T. Strumolo Association at a Valentine's dance Sunday evening at The Fountain, Watessing Avenue, Belleville. Senator Donald C. Fox will be the installing officer.

Others to be installed include Frank Simini, vice president; Mrs. Rose Senatore, treasurer; Miss Norma Napoliello, secretary; Michael Pizzuto, sergeant-at-arms, and the following trustees: Michael Del Russo, Salvatore Senatore and Ray Potomone. Gerardo DeTullo will be the group's legal advisor.

Chairman of Sunday's event is Anthony DiGeronimo who reports that a plaque will be awarded to retiring president, Michael DeTullo.

Also on the evening's agenda is a presentation of Valentine gifts by wives to husbands. Anthony DeBenedictis will be master of ceremonies.

PARISO BROS. Special Purchase

1st

for the very first time at these prices!

daystrom

quality...styling...custom features

Choice of Three DAYSTROM Budget Sets

| | | |
|---|--|--|
| TABLE 30x40 OPEN 48 4 Styleline Chairs Regular 89.95 | TABLE 35x50 OPEN 60 4 Styleline Chairs Regular 109.95 | TABLE 35x50 OPEN 60 6 Styleline Chairs Regular 129.95 |
| SALE PRICE ONLY 59.95 | SALE PRICE ONLY 79.00 | SALE PRICE ONLY 99.95 |
| 5-Piece Set | 5-Piece Set | 7-Piece Set |

- Daystromite table tops withstand heat up to 275° F.
- Chairs covered in washable, wearable vinyl
- Legs in Coloraminc bronze, resist scratches, marks, burns

100 VARIETIES ON DISPLAY AT BOTH STORES

EASY TERMS—MONTHS TO PAY

DINING ROOMS—LIVING ROOMS—BEDROOMS—BEDDING

PARISO BROS. INC.

TUES., THURS., SAT. 6 P.M. • MON., WED., FRI. 9 P.M.

1055 CLINTON AVENUE IRVINGTON, N. J. ES 4-1700

16 WASHINGTON AVENUE BELLEVILLE, N. J. PL 9-2273

This is a pile of bills



Pay them with a loan from FIDELITY UNION TRUST COMPANY

The Bank-That's Strong for You!

Member Federal Deposit Insurance Corporation

You'll find a "WASHINGTON'S BIRTHDAY" value at our

OLDSMOBILE

Open House



Don't miss the display!

There's a '61 OLDS for everyone!

Make a date today... with your family and friends... to visit our showroom during the gala Washington's Birthday Open House Celebration! You're invited to take a demonstration drive in the new Oldsmobile of your choice... ready and waiting for you to see and drive!

VISIT YOUR LOCAL AUTHORIZED OLDSMOBILE QUALITY DEALER

ALADDIN OLDSMOBILE, INC.

53 Washington Ave. Belleville, N. J.

Belleville Officials Attend County Budget Hearing

A delegation of Belleville officials including three town officials, attended Thursday's session of the Essex Freeholders when the county's record high 1961 budget of \$41,436,354 was adopted.

The new county budget is expected to raise Belleville's levy about 19 tax points. Representing Belleville at the Freeholders session were Francis H. McCoy,



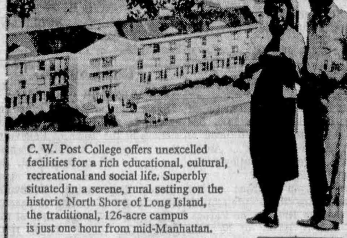
ASH WEDNESDAY
Yesterday was Ash Wednesday which marks the beginning of Lent. Most churches in Belleville observed the day with special services.

C.W. POST COLLEGE
OF LONG ISLAND UNIVERSITY • BROOKVILLE, LONG ISLAND

Accredited by Middle States Association

A COEDUCATIONAL CAMPUS COLLEGE IN THE HEART OF LONG ISLAND, N.Y.

LIBERAL ARTS, SCIENCES, PRE-PROFESSIONAL AND GRADUATE PROGRAMS



C. W. Post College offers unexcelled facilities for a rich educational, cultural, recreational and social life. Superbly situated in a serene, rural setting on the historic North Shore of Long Island, the traditional, 126-acre campus is just one hour from mid-Manhattan.

MEN'S and WOMEN'S NEW RESIDENCE HALLS AVAILABLE

Write or Phone Admissions Office for Appointment Mayfair 6-1200

MAIL COUPON FOR COMPLETE INFORMATION

Director of Admissions, C. W. POST COLLEGE NIA

B.O., Greenvale, Long Island, N.Y.

Please send me information bulletin

☐ Women's Residence Hall ☐ Men's Residence Hall

☐ Undergraduate ☐ Graduate ☐ Day ☐ Evening

Name.....

Address.....

City..... State.....

I expect to be graduated from..... in.....



THE SEVEN AGES OF CHILDHOOD

The record every parent needs of his child's growing-up years can be his in just seven professionally made portraits! These are the seven ages that mean the most in terms of changes in the child. Our booklet "The Seven Ages of Childhood" tells the story. Request your copy today.

KONDRECK Photographers
577 WASHINGTON AVE. PL. 9-4050

State Commander Will Speak Tonight At Newark Post

Edward R. Kenny of 48 Crestwood Avenue, Belleville will preside at tonight's special meeting of the Essex County American Legion posts to hear Edward Wysocki, state commander.

Kenny is Essex County Commander of The American Legion. He will greet Wysocki in behalf of the county's 41 Legion posts at the home of Newark Post 10, located at 59 Lincoln Park, Newark. The visitation meeting is set for 8 p.m.

Wysocki will address the county Legionnaires on the numerous state and national programs of the Legion, including the current membership campaign being conducted throughout New Jersey.

Shop Rite Customers Can Obtain Golden Book Illustrated Encyclopedia

Belleville's Royal Shop Rite super market is now offering the Golden Book Illustrated Encyclopedia for Young People. Clayton Shepherd, Shop Rite manager, reports the first volume is now on sale at 49 cents. Volumes two through 16 will be available in succeeding weeks at 99 cents each, Sepherd said.

The 16 - volume work includes the entire range of human culture and uses the latest techniques of visual education to make learning interesting and easy for young people. Each volume is fully illustrated in color and all subjects are up - to-date.

The encyclopedia has received wide acceptance from parents because of the characteristically

simple way in which the book presents difficult matter to children. Shepherd told The Times that among the subjects covered by the encyclopedia are science, mathematics and history. All volumes are hard - covered and use large, easy to read type and illustrations.

SOCIAL DEADLINE

Deadlines for social news, including women's club news, P.T.A.'s, weddings, births and engagements, is Friday noon.

DATE OF MOURNING
George - Washington, whose birthday is celebrated next Wednesday, died at Mt. Vernon on December 14, 1799. The standard biographies of Washington are by Fitzpatrick, Ford, Hughes and Stephenson. Many of these books and others can be found in the Belleville Public Library.

LEGAL HOLIDAY

Washington's Birthday is a legal holiday in all the states, the District of Columbia, Canal Zone, Guam, Puerto Rico and the Virgin Islands. Hawaii celebrates "Presidents' Day" as a legal holiday, on February 22.

Sends Savi to Jail

Nutley Magistrate Edwin J.C. Joerg sentenced Thomas Savi, 23, of 275 Belleville Avenue, Belleville to six months in the Essex County Penitentiary and fined him \$100 on charges of assault and battery against Police Sergeant Theodore Steinmeyer on January 14. Savi pleaded innocent.

OUR CLASSIFIED ADS
BRING QUICK RESULTS

ELECTROLUX (R)
(Factory Branch)
SALES SERVICE SUPPLIES
Authorized
CALL PL. 3-8731
24 Hour 28 1/2 Belleville Ave.
Service Bloomfield

Fun for everyone
AIR - CONDITIONED
at the New **General Oglethorpe**
HOTEL GOLF CLUB • COTTAGES

One of the world's finest resorts offers every facility and activity—swimming, tennis, boating and salt water fishing — 18-hole championship golf course at door... dancing nightly in the beautiful Riverside Room... social director—organized activities and entertainment
Choice of American or European Plan.
COMPLETE FACILITIES FOR GROUPS AND CONVENTIONS
On Wilmington Island near historic SAVANNAH, GEORGIA
Write today for FREE Illustrated Brochure or see your Travel Agent

YES! WE REPAIR & SERVICE

Admiral
Air Chief
Air Way
Apex
Cadillac
Compact
ELECTROLUX
EUREKA

Filler Queen
GENERAL
ELECTRIC
Hamilton Beach
HOOVER
Kenmore
KIRBY
LEWYT
Lifetime

PREMIER
Remington
Kenair
Revelation
ROYAL
SINGER
UNIVERSAL
WESTINGHOUSE

And 112 other makes of cleaners

NUTLEY VACUUM CLEANER CO.
283 Franklin Ave. at the Center NO. 7-7757

GO
THE FASTEST WAY TO
THE CENTER OF N.Y.
DIRECT - NO CHANGES
De CAMP BUS LINES
For Timetable Information... GRegory 1-2300... Clifton, N.J.

ALL STORES CELEBRATE

2 GUYS FROM HARRISON

GRAND OPENING

"2 GUYS" NEWEST FOOD MARKET

TOTOWA Route 46

Open Daily 'til 10 Sun. 'til 7
175 Passaic Ave., Kearny

PORK LOIN Sale!
Cut from Fresh Young Porks

FULL CUT RIB HALF 37¢ lb.

FULL CUT LOIN HALF 47¢ lb.

Boneless ROUND ROAST 68¢ lb.
No Fat Added

Grade 'A' BUTTER 62¢ LB.
SOLID PRINTS

Golden Cream Corn 3 FOR 38¢
303 Can

Campbell's or Heinz SOUPS
All vegetable varieties
6 10 1/2 oz Cans 68¢

MORTONS POT PIES
Chicken - Beef - Turkey
5 8 oz. pkgs. 88¢

KRISP CALIFORNIA ICEBERG LETTUCE
2 large heads 21¢

VAN BRODE CEREAL
10 Variety Packs
29¢

SWANSDOWN CAKE MIXES
White-Yellow & Devil Food
3 19 oz. pkgs. 88¢

PASTRAMI
Best Brand **68¢ lb.**
U.S. No. 1 Canadian SMELTS
Delicious large Lenten Dish **27¢ lb.**

Food prices effective thru Sat., Feb. 18th. We reserve right to limit quantities. Not responsible for typographical errors.



A car-pool for work?
Why not one for church?
Invite your neighbor to join
you at church this week.



CHURCH LISTINGS

Grace Baptist Church

Rev. Albert Lawson, pastor
Overlook Avenue and
Bremont Street

Sunday — 9:45 a.m. Church School with departments — and classes for all age levels including Adult Class led by pastor. 11 a.m. Morning Worship and sermon on topic, "Making Vital Contact." A Nursery is provided for pre-school children during the hour of worship. 7 p.m. Baptist Youth Fellowship for people of junior and senior high school age.

St. Anthony R. C.

58 Franklin Street
Rev. Titian Menegus
Thursday—7, 7:30 and 8 a.m. Mass; 7:30 p.m. Devotions: Perpetual Novena and Devotions to Our Lady of the Miraculous Medal and to St. Anthony. Benediction.

Friday—Masses at 7, 7:30 and 8 a.m.

Saturday—7, 7:30 and 8 a.m. Mass; 4:50 p.m. Confession.

Sunday—Masses in church at 8:30, 9, 10 and 11 a.m. and 12 noon. Masses in chapel at 9, 11:05 a.m. and 12 noon. Nine o'clock Mass in church is for children. 2 p.m. Sacrament of Baptism.

Monday—7, 7:30 and 8 a.m. Mass.

Tuesday—7, 7:30 and 8 a.m. Mass.

Wednesday—7, 7:30 and 8 a.m. Mass.

Wesley Methodist Church

Washington Ave. at Academy St.
Belleville 9, N. J.

Sunday—9:30 a.m. Sunday School; 11 a.m. Morning Worship. 7 p.m. JIF; 7:30 p.m. MYF meeting.

Little Zion, U.A.M.E.

154 Stephen Street
Rev. Mary A. Farrar, pastor
Sunday—11 a.m. Worship Service.

Christ Episcopal Church

393 Washington Avenue,
Belleville

The Rev. Fred Long, Rector
Sunday—7:30 a.m. Holy Communion; 9:15 a.m. Family Service; 11 a.m. Morning Prayer with sermon.

Belleville Reformed Church

Main and Rutgers Streets,
Rev. Thomas Ten Hoeve,
Minister

Friday (Feb. 24) 8 p.m. Couples Club.

Sunday — 9:30 a.m. Church School; 11 a.m. Worship Service on topic, "What Did Jesus Think?" 7:30 p.m. Youth Council at Methodist Church.

Tuesday — 7 p.m. Girl Scout meeting.

Wednesday — 8 p.m. Lenten Worship. Fellowship hour follows.

Thursday—8 p.m. Choir.

Bethany Church

(Evangelical Lutheran)
Jerusalem and New Streets

The Rev. Robert Siegel, Pastor
Sunday — 9:30 a.m. Sunday School; 9:45 and 11 a.m. Worship Service; 7:30 p.m. Luther League.

Silver Lake Baptist Church

166 Franklin Street,
Belleville

The Rev. B. Pascale, Pastor
Sunday—10 a.m. Bible school for all ages, 11 a.m. Morning Worship Service. 4:30 p.m. Youth Service. 8:30 p.m. Preaching Service.

Wednesday—7 p.m. High School Choir rehearsal.

Friday—3:30 p.m. Junior Choir rehearsal. 8 p.m. Senior Choir rehearsal.

Christian & Missionary Alliance

Union and Hancock Aves., Nutley
Rev. Anthony Guenther, Pastor.

Sunday—9:45 a.m. Family Sunday School hour with classes from Nursery to Adult Bible Group. 11 a.m. Worship Hour with Rev. Guenther. 6:30 p.m. Junior and Senior Alliance Youth Fellowship meetings. 7:30 p.m. Son and Praise Service with Rev. Guenther.

Fewsmith Memorial Presbyterian Church

Union Avenue and Little Street
George L. Van Leuven, Pastor

Friday 1:30 and 8 p.m. World Day of Prayer observances sponsored by Belleville Council of Church Women. Observance will be at Christ Episcopal Church.

Saturday — 8:30 p.m. Couples Club meeting.

Sunday — 9:30 a.m. Church School with classes for all age groups. 9:30 and 11 a.m. Morning worship in observance of Missions Sunday. The Rev. Ray C. Downs in charge of the Student Christian Center at Bangkok, Thailand, will speak at both services.

4 p.m. A Fellowship Hour will be held in the church parlor with the Downs family as honored guests. 6:30 p.m. Junior High Fellowship. 7:45 p.m. Senior High Fellowship.

Monday — 3:45 p.m. Girl Scouts and Brownies.

Tuesday — 8 p.m. Evening circles of Women's Associations.

Thursday — 8 p.m. Second in series of weekly Lenten services with the Watching Players of the Watching Presbyterian Church of Bloomfield presenting "The Sign of Jonah."

Note: The Wednesday night schedule for the Lenten services will be resumed March 1.

Temple B'nai Israel

192 Centre Street,
Nutley

Rabbi Hyman Danzig
Friday — 8:30 p.m. Evening service.

Saturday — 9 a.m. Sabbath morning service. Midnight prayer service.

Cong. Ahavath Achim

Belleville Jewish Center,
125 Academy Street,
Rabbi Victor Cohen

Friday — 8:30 p.m. Evening service with sermon.

Saturday—9 a.m. Service and sermon.

Temple Menorah

936 Broad Street,
Bloomfield

Rabbi Alan Mayor Sokobin
Friday — 8:30 p.m. Services with sermon.

Saturday—11 a.m. Junior congregation under the direction of Rabbi Sokobin.

Montgomery Presbyterian Church

638 Mill Street,
Belleville

Sunday — 9:30 a.m. Sunday School; 9:30 and 11 a.m. Morning Worship Service.

Second Baptist Church

Stevens and Academy Street,
Belleville

The Rev. Henderson Goldstein, Pastor
Sunday—10 and 11 a.m. Morning worship service.

Christian Apostolic Church

77 Wallace Street,
Belleville

The Rev. Joseph Grimaldi, Pastor
Sunday — 9:45 a.m. Worship service in both English and Italian, and Sunday School.

Tuesday—7:30 p.m. Service in English.

WILLIAM V. IRVINE & SON

MEMORIAL HOME

For more than fifty years it has been our privilege to render personal service and offer friendly counsel to bereaved families. Our service is performed with reverence and dignity and is always within the means of all.

276 Washington Ave. Belleville, N.J.
Plymouth 9-1114
William V. Irvine Jr., Director

LEGAL NOTICE

TAKE NOTICE that application has been made to the Excise Board of the Town of Belleville, New Jersey to transfer to Acre Lounge Inc. trading as Acre Lounge for premises located at 200-212 Mill Street, Belleville, New Jersey, the Plenary Retail Consumption License C-28 heretofore issued to George Hill trading as Hitchin' Post for premises located at 200-212 Mill Street, Belleville, N. J.

Anthony Giordano, President and Treasurer.
52 Mt. Prospect Avenue
Belleville, N. J.
Frank Tasselli, Vice President and Secretary.
9 Columbus Avenue
Belleville, N. J.

Objections if any should be made immediately in writing to Eugene G. Barnett, Municipal Clerk of the Town of Belleville, New Jersey.
Acre Lounge Inc.
Anthony Giordano
President and Treasurer
52 Mt. Prospect Avenue
Belleville, N. J.
FEE: \$6.84

Belleville Assembly Of God

174-178 Holmes Street
Rev. Anthony DiQuattro, pastor

Sunday — 9:45 a.m. Sunday School; 10:45 a.m. Morning Worship.

St. Peter's Church

159 William Street,
Belleville

Rev. Msgr. J. M. Kelly
Thursday — 6:30, 7:30 and 8 a.m. Mass. 7 p.m. High School Religion and CYO.

Friday — Masses at 6:30, 7:30 and 8 a.m.

Saturday - Masses at 6:30, 7 and 8 a.m.

Sunday—6, 7, 8, 9 (children), 10, 11 a.m. and 12 noon Masses in the church and 9:05 and 10:05 a.m. in the new auditorium. Benediction of Most Blessed Sacrament follows 11 o'clock Mass.

Sunday School follows 9 o'clock Children's Mass. 2 p.m. Sacrament of Baptism. CYO Communion meeting after 5 o'clock Mass.

Monday—6:30, 7:30 and 8 a.m. Masses.

Tuesday—6:30, 7:30 and 8:30 a.m. Mass.

Wednesday — 6:30, 7:30 and 8 a.m. Mass.

WHEN DEATH OCCURS CALL

F. Douglas Wadsworth

WADSWORTH FUNERAL HOME

524 Union Avenue
Plymouth 9-2879

KIERNAN

Dignified
Funeral Service

AVAILABLE TO ALL
REGARDLESS OF FINANCIAL
CIRCUMSTANCES

NON-SECTARIAN

KIERNAN FUNERAL HOME

GEORGE F. KIERNAN
101 UNION AVE. BELLEVILLE, N.J.
PLYMOUTH 9-3503

LEGAL NOTICE

SURROGATE'S NOTICE
ESTATE OF
HENRY PETERS, deceased.
NOTICE OF SETTLEMENT
Notice is hereby given that the accounts of the subscriber; Administrator of the estate of HENRY PETERS, deceased, will be audited and stated by the Surrogate and reported for settlement to the Essex County Court, Probate Division, on Tuesday,

the 21st day of FEBRUARY next.
SAMUEL F. PENZA
Dated: January 12, 1961
GURRY & CONLAN,
Attorneys
11 Commerce Street
Newark 2, N. J.
Fee: \$14.00
SURROGATE'S NOTICE
Dated: JANUARY 19, 1961
ESTATE OF
ARTHUR M. ROTHENBERG,
deceased.
Pursuant to the order of DAVID H. WIENER, Surrogate of the County of Essex, this day and on the application of the under-

signed, Executrix of said deceased, notice is hereby given to the creditors of said deceased to exhibit to the subscriber, under oath or affirmation, their claims and demands against the estate of said deceased within six months from this date, or they will be forever barred from prosecuting or recovering the same against the subscriber.
FRIEDA ROTHENBERG
JACOB ZIMMERMAN,
Attorney
17 Academy Street
Newark 2, N. J.
Fee: \$16.00

GRACE BAPTIST CHURCH

Overlook Avenue & Bremont

Rev. Albert V. Lawson, Minister

11 A.M. — Morning Worship & Sermon

"Making Vital Contact?"

(Questions Jesus Asked)

A Cordial Invitation To All



And chances are — if this young couple are like thousands of other area people — they will pay for their purchase with a check drawn on the Peoples National Bank and Trust Company. Don't carry large amounts of cash on your shopping trips — simply carry a checkbook and a pen. Open your Checking Account at the Peoples National Bank and Trust Company today.

PEOPLES NATIONAL BANK AND TRUST COMPANY



237 WASHINGTON AVENUE

BELLEVILLE

NEW JERSEY



Member Federal Deposit Insurance Corporation

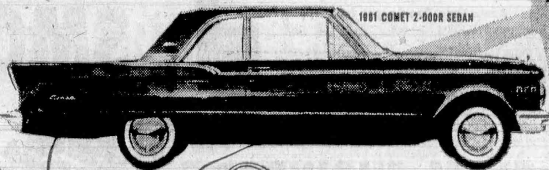
Member Federal Reserve System

YOU TAKE THE WHEEL... WE'LL MAKE THE DEAL

THE BIG DRIVE IS ON!



1961 MERCURY METEOR 2-DOOR HARDTOP



1961 COMET 2-DOOR SEDAN

SAVE BIG!
MERCURY
NOW, A STANDARD-SIZE CAR WITH
ALL THOSE FAMOUS MERCURY VALUES
IN THE POPULAR-PRICE RANGE

It's all Mercury and then some. More rear-seat room than last year. Wider doors. Bigger trunk. Road-smoothing Cushion-Link Suspension (on Monterays and Meteor 800's). New V-8's and Super-Economy "6". 7 money-saving self-serving features. Big, big, Big Drive trade-ins.

SAVE BIG!
COMET
NOW, THE SUCCESS COMPACT IS
ONE OF THE LEAST EXPENSIVE... HAS
LOW PRICE, HIGH RESALE VALUE

Comet lists up to \$331 below* other compacts. Resale value is up to \$617 higher!*** And look at Comet's fine-car styling and appointments. Big-car ride on a longer wheelbase. 28 cu. ft. trunk. Choice of 2 peppy economy engines in a 2- or 4-door sedan, or station wagon.

*Based on a comparison of all manufacturers' suggested retail prices.
***Based on manufacturers' suggested retail prices and Automotive Marketing Reports figures.

ASK THE MAN WHO WEARS THIS BUTTON
IT'S SMART TRADING TIME AT YOUR MERCURY-COMET DEALER'S



A. A. A. MOTORS

25 Washington Ave.

Belleville, N. J.



HERE'S PROOF *POSITIVE*

LIVING COSTS LESS AT FOOD FAIR

CHECK THE SAVINGS...

OPEN LATE: THURS. to 9pm - FRI. to 10 pm
WED. & SAT. To 6 pm — FREE PARKING

CLIP COUPONS BELOW

For An Extra Bonus of **210** MERCHANTS GREEN STAMPS

IN ADDITION TO THE STAMPS YOU ALWAYS GET WITH YOUR PURCHASES

FREE 100 extra FREE
MERCHANTS GREEN STAMPS
With Purchase of Unit No. 1
WEDGWOOD & CO. LTD. DINNERWARE
4-Pc. PLACE SETTING... \$1.69
Adults Only. One Coupon Per Shopping Family

Name _____
Address _____
Coupon Expires Sat., Feb. 18. No Substitutes
B.T.

FREE 50 extra FREE
MERCHANTS GREEN STAMPS
With Purchase of Two
BROWNIE COMPLETE NURSERS
Adults Only. One Coupon Per Shopping Family

Name _____
Address _____
Coupon Expires Sat., Feb. 18. No Substitutes
B.T.

FREE 30 extra FREE
MERCHANTS GREEN STAMPS
With Purchase of Any Package
SMOKED HAM SLICES
Adults Only. One Coupon Per Shopping Family

Name _____
Address _____
Coupon Expires Sat., Feb. 18. No Substitutes
B.T.

FREE 30 EXTRA FREE
MERCHANTS GREEN STAMPS
With Purchase of 1-lb.
KITCHEN FRESH SALAD OR COOKED FOODS
Adults Only. One Coupon Per Shopping Family

Name _____
Address _____
Coupon Expires Sat., Feb. 18. No Substitutes
B.T.

SALTESEA
CLAM CHOWDER

Manhattan Style 51 oz. can **39¢**

DOG FOOD Thrivo 3 1-lb. cans **40¢**

NECCO
SKY BARS
A NEW 4 IN 1 TASTE TREAT

pkg. of 6 5c bars **25¢**

GENTLE FELS 22 oz. can **52¢**

FELS NAPTHA SOAP large bar **10¢**

FRESH CAUGHT
WHITE FISH
lb. **49¢**

MAYFAIR
BUTTER
LIGHTLY SALTED 1 lb. solid **65¢**

IMPORTED
LOBSTER TAILS
MEDIUM lb. **\$1.29**

Romano Cheese Domestic lb. **89¢**

Cheese Slices Mayfair Amer., Swiss, Pimento 8 oz. pkg. **33¢**

Cream Cheese Mayfair 2 3 oz. pkgs. **25¢**

Swiss Slices Mayfair Natural 8 oz. pkg. **39¢**

Blue Cheese Imported lb. **83¢**

Cottage Cheese Sealtest Vegi-Dill 12 oz. pkg. **29¢**

Mild Cheese County Fair lb. **49¢**

SLICED
AMERICAN CHEESE
YELLOW OR WHITE lb. **53¢**

BOSTON BONNIE
Fresh Frozen
FISH STICKS
2 8 oz. pkgs. **49¢**

Halibut Steak Selected lb. **59¢**

Boston Mackerel Selected lb. **39¢**

Shrimp Selected Medium lb. **69¢**

Nº. 1 Smelts Selected lb. **35¢**

Pizza Pie All Ready Made 3 for **\$1.00**

Mac. & Cheese Birdseye Frozen 15 oz. pkg. **29¢**

Haddock Birdseye - In Wine Fresh Frozen 14 oz. pkg. **39¢**

ADDITIONAL SAVINGS IN ALL DEPARTMENTS

FAB DETERGENT
4 large pkgs. **\$1.00**

FACIAL TISSUES
GOLDEN STAR PINK or WHITE 6 400 sheet pkgs. **\$1.00**

HEART'S DELIGHT
PEACHES FREESTONE 2 29 oz. cans **55¢**

HUNT'S STEWED
TOMATOES 3 14 1/2 oz. cans **49¢**

STAR-KIST LIGHT CHUNK
TUNA FISH 3 6 1/2 oz. cans **79¢**

PINEAPPLE-GRAPEFRUIT
HI-C DRINK 2 46 oz. cans **47¢**

SMOKED HAMS
FULLY COOKED TO ASSURE YOU LESS SHRINKAGE THROUGH COOKING

SHANK PORTION lb. **39¢**

BUTT PORTION lb. **49¢**

PSG BRAND TOP QUALITY & U. S. CHOICE FOR **FLANK STEAK** LONDON BROIL lb. **89¢**

STOCK UP YOUR FREEZER **SALE PRICE**
ON THESE P.S.G. BRAND TOP QUALITY MEATS... Protected - Selected - Guaranteed

Center Cut Pork Chops Sold Only in 3-lb. pkgs. YOU SAVE 60c on 3 lbs. lb. **79¢**

Shoulder Lamb Chops Sold Only in 3-lb. pkgs. YOU SAVE 60c on 3 lbs. lb. **69¢**

Fresh Ground Chuck Sold Only in 3-lb. pkgs. YOU SAVE 60c on 3 lbs. lb. **69¢**

Cube Beef Steaks Sold Only in 3-lb. pkgs. YOU SAVE 60c on 3 lbs. lb. **99¢**

Chicken Breasts Sold Only in 2 1/2-lb. pkgs. YOU SAVE 20c on 2 1/2 lbs. lb. **55¢**

Lesser Quantities Sold at Regular Price

TEMPLE ORANGES
FLORIDA SWEET JUICY large size for **10 39¢**

PASCAL CELERY
Crisp Tender Florida large stalk **15¢**

M&M CANDY COATED ALMONDS 4 3/4 oz. pkg. **39¢**

LADY FAIR COFFEE Rich Winery Custom Ground at time of purchase 1-lb. bag **59¢**

LEVER BROS. - RAINBOW OF VALUES!

LUX TOILET SOAP 4 bath size bars **45¢**

SURF DETERGENT giant pkg. **71¢**

LUX DETERGENT LIQUID 22 oz. can **55¢**

WISK DETERGENT LIQUID 1/2 gal. **\$1.19**

PLENTY OF
FREE PARKING

554 Washington Ave., Belleville

STORE HOURS
Monday 9 - 9
Tues. 9 - 9
Wed. 9 - 6
Thurs. 9 - 9
Fri. 9 - 10
Sat. 8 - 6

Prices Effective Feb. 15, 16, 17 & 18 Only.

We Reserve the Right to Limit Quantities.

By PHIL WHITE

South Side High School of Newark had been rescheduled in the Belleville basketball scheduled a number of times this season. The last attempt to have the two teams meet was set for last Friday, February 10. But because of Belleville's entry in the Essex County Tournament the night before, the Friday night date with the Sun Streaks was called off.

Latest word, and this is official, is that the South Side-Belleville ball game has now been cancelled completely. Although not its intention, you may consider the cancellation an omen of the local sports world.

The March of Dimes drive netted \$73.25 at Sunday evening's CYO benefit basketball game between St. Peter's of Belleville and Sacred Heart of Bloomfield. The annual benefit game was an exciting one with the local team coming out on top.

Belleville High varsity players didn't fare too well in the county tournament but we're hoping the jayvees might do a little better. Last year's jayvee squad nearly went to the top in the Essex County Junior Varsity Tournament. We don't know exactly when Belleville will be playing in the tournament — the dates hadn't been announced when this column was written.

This year's junior varsity squad boasts some colorful personalities which will give the JV tournament fans the excitement they've become accustomed to. Bob Byers, Dave Hatch and Richie Luzzi have been dropping in the points with consistency all season long.

Looking ahead a bit, we've been assured that Belleville, along with Nutley High, will have crew squads this spring. There was some question about the future of this popular sport last fall when the two schools found themselves without a coach. Now that basketball's coming to an end — it soon will be nothing but crew and track and baseball and golf and . . .

PRESIDENT'S WIFE

Mrs. Martha Dandridge Curtis Washington, wife of the first President, died in 1802 and was buried at Mount Vernon. George Washington's birthday is celebrated next Wednesday, February 22.

The Belleville Times

News

THURSDAY, FEBRUARY 16, 1961

THE BELLEVILLE TIMES-NEWS, Belleville, N. J.

PAGE SEVEN

East Orange High Edges One Point Belleville Defeat In Overtime on Tuesday

BY ROGER WARTELL

Belleville High School wound up its 1960-61 basketball campaign Tuesday in a game which came out of an overtime period to give East Orange a 50-49 edge over the Bellos. The loss gives Belleville a 6-10 mark for the season.

Veteran Mike Sandomano, a senior, was high man in the game with 20 points. Looking ahead to next year, Belleville coach John Westlake used some of the junior varsity players who gave fans a pleasant surprise.

Bob Byers and Richie Luzzi, both sophomores, netted 11 and 10 points respectively and with the exception of Sandomano, they were the only Belleville players to hit the double figures.

Richie Carillo and George Pearce paced the attack for the Panthers who never had a command of the game. Although East Orange had a slight edge (11-9) at the close of the first period, Belleville was in the lead, 21-16, at the half time intermission.

The Bellos outscored the Blue and Gold in the third pe-

riod 14-10 and the final quarter's scoring evened the total team points at 44-44 requiring the overtime period.

OVERTIME

Sandomano opened the three-minute extra period with a jump shot which was quickly countered by Lennie Williams' field goal and the score remained tied, this time 46-46. Next to sink a basket was the Panthers' Jim Clark but young Luzzi cancelled out this lead and a 48-48 tie resulted with only a little more than 30 seconds remaining.

Clark then made good a layup giving East Orange a 50-48 edge. With four seconds left, Sandomano was fouled and given a one-point option at the foul line. He hit the first attempt and missed the second. East Orange grabbed the rebound and that ended the 1960-61 court season for BHS.

The box score:

| EAST ORANGE (50) | G. | F. | T. |
|------------------|----|----|----|
| Richie Carillo | 6 | 1 | 13 |
| George Pearce | 5 | 3 | 13 |
| Lennie Williams | 3 | 2 | 8 |
| Jim Clark | 4 | 2 | 10 |
| Charles Jackson | 0 | 1 | 3 |
| Bill Raye | 0 | 1 | 3 |
| Morris Turner | 1 | 0 | 2 |

TOTALS 20 10 50

| BELLEVILLE (49) | G. | F. | T. |
|-------------------|----|----|----|
| Sal LoCoco | 0 | 0 | 0 |
| Mike Sandomano | 8 | 4 | 20 |
| Larry Latore | 0 | 0 | 0 |
| Frank Amichiarico | 1 | 0 | 2 |
| Carillo | 2 | 1 | 5 |
| Byers | 4 | 3 | 11 |
| Richie Luzzi | 2 | 6 | 10 |
| Joe Petrillo | 0 | 1 | 1 |

TOTALS 17 15 49

| Score by periods: | 1 | 2 | 3 | 4 | Total |
|-------------------|----|----|----|----|-------|
| East Orange | 11 | 5 | 10 | 18 | 44 |
| Belleville | 9 | 12 | 14 | 9 | 44 |
| Overtime scoring: | 1 | 2 | 3 | 4 | Total |
| East Orange | 6 | 5 | 0 | 0 | 11 |
| Belleville | 5 | 4 | 0 | 0 | 9 |

Referees, Don and Cito.

Montclair Tops Belleville High In Tournament

Belleville High had its bid for the Essex County championship foiled in record time, as the Bellos found themselves tangled with sixth seeded Montclair in the ECT opener in the Seton Hall gym February 9. The Mounties, taking an early lead, pulled away steadily and won 59-46 on the merits of their well-balanced offense.

One of Montclair's three losses this season came in a 58-42 drubbing by the Blue and Gold, in which the Bellos controlled play completely in the second half to come from behind and win. However, the Belleville squad could not come up with any strong revitalization Thursday, as Montclair did a fine job of holding the Blue and Gold down.

After a layup by Elvid Christ, mas put Montclair ahead 5-3 in the first period, the Bellos were unable to get back in contention for the rest of the game.

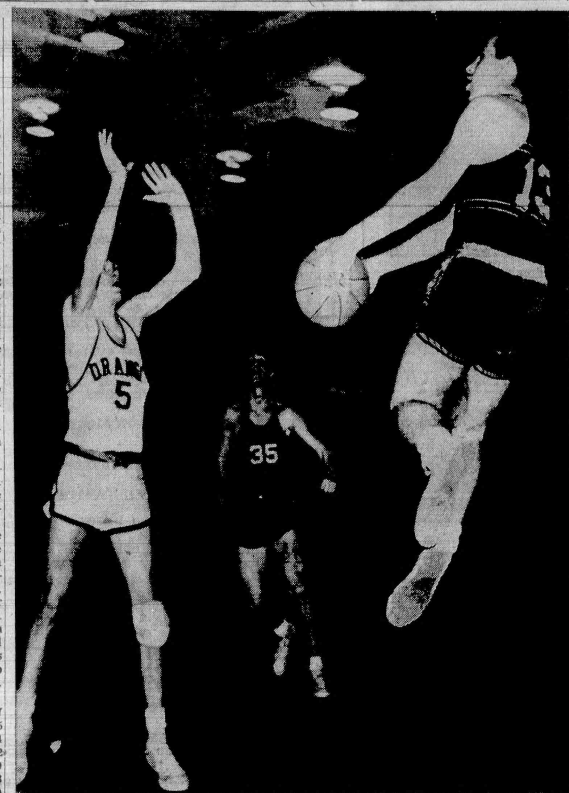
Leading 12-7 at the end of the first period, Montclair pulled away to a 30-16 halftime lead, which all but put the game on ice. The Mounties were sparked by the amazing shooting of Gary Testa and Ben Mobley during that quarter who each had seven points. Mobley wound up with 17 for the night, while Testa had 12. Montclair's overall balance in their attack and defense proved to be the key in the victory, as Belleville was unable to come up with a good pattern of attack.

The box score:

| BELLEVILLE (46) | G. | F. | T. |
|-----------------|----|----|----|
| Higgins | 2 | 3 | 7 |
| Amichiarico | 1 | 3 | 5 |
| Latore | 0 | 4 | 4 |
| Sandomano | 5 | 2 | 12 |
| LoCoco | 4 | 2 | 10 |
| Byers | 2 | 4 | 8 |
| Luzzi | 0 | 0 | 0 |
| TOTALS | 14 | 18 | 46 |

TOTALS 17 15 49

| Score by periods: | 1 | 2 | 3 | 4 | Total |
|-------------------|----|----|----|----|-------|
| Montclair | 12 | 18 | 17 | 12 | 59 |
| Belleville | 7 | 9 | 13 | 17 | 46 |



RED HIGGINS FLYS AGAIN! Red (13) steals ball from Orange's Charlie Rothenberger (5) in Friday's contest. Higgins contributed a total of 15 points to the Bellos 57-52 triumph over Orange. High man for the Blue and Gold was Mike Sandomano (35) seen in the center of this photo. (Photo by Dom Giovachino)

PERCE STRINGS by BELLEVILLE RECORD SHOP



FRANCHISED DEALER FOR BI-PHONIC COUPLER

Belleville RECORD SHOP
PL 9-5663
142 WASHINGTON AVE. • BELLEVILLE, N. J.

DO IT TODAY
VIOLA BROS., Inc.
180 WASHINGTON AVE., NUTLEY

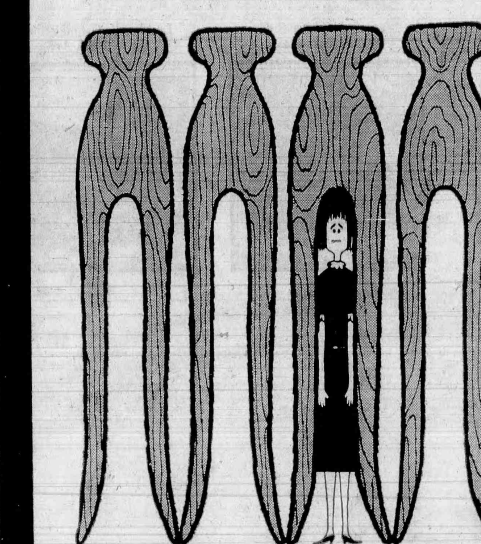
BASEMENT AND ATTIC
MODERNIZING

free handyman plans come in!

- Mason Tools
- Plywood Cut to Size
- Slate
- Sheet Rock
- Train Tables
- Roofing
- Moulding
- Ping Pong Tables
- Hard Board
- Panelling
- 2x4's - 2x3's - 1x2's - 1x3's
- Ceiling Tile
- Pre-Finished Plywood
- Mason Lath

CALL North 7-7000

Ladies



FEEL LIKE A "CLOTHESPIN" CAPTIVE?
You Need an Automatic

CLOTHES DRYER

Free yourself of clothes line drudgery. Fluff-dry your laundry in any weather, day or night, in less than an hour—automatically!

Buy a clothes dryer from your favorite store.

DON'T BE A DRUDGE — BUY A DRYER

KEGLERS KORNER

Straight Pins Ahead

The Straight Pins with a record of 33 wins and 24 losses are holding on to their first place position in the Recreation Women's Wednesday Night Bowling League, according to Commissioner George F. Kiernan.

The second place Raiders are two-and-a-half games behind with a record of 30½ wins and 28½ losses. Ann Bertolina of the Straight Pins rolled high game 224 and high series 563, but Dolores Yanick of the Slick Chicks has tied her high average of 156. The girls roll every Wednesday evening at nine at Branch Brook Lanes.

The Sparkplugs are still maintaining their number one position in the Recreation Housewives Bowling League, the second place Beatniks, although fighting hard are still three games behind. Marie Gorman of the Spark Plugs is still high girl in the League, with her high average, 148, high game 203 and high series 522. Ann Somma of the Suburban Jets rolled high total pins 808.

The girls roll every Thursday afternoon at one at Olympic Lanes.

STANDINGS

| TEAMS | W | L |
|-----------------|-----|-----|
| Straight Pins | 33 | 21 |
| Raiders | 30½ | 28½ |
| Slick Chicks | 30 | 27 |
| Spares | 30 | 27 |
| Nutty Squirrels | 28½ | 28½ |
| Pin Pals | 27 | 30 |
| Sad Sacks | 24 | 33 |
| Belles | 23 | 34 |

SEE EUROPE FOR ONLY \$12 DAILY



INCLUDING MEALS

See all the fascinating parts of Europe the comfortable way... the Global Tour way. Just \$12 daily gives you the relaxed comfort of a luxurious motorcade, accommodation in pleasant hotels, all of your meals, sightseeing tours, luggage handling, a tour escort, and even tipping!

On any of the wonderful Global Tours you will see more, learn more, have far more fun in the group than by travelling alone. On a Global Tour you don't have to do a thing except enjoy yourself.

Take your choice from the biggest and best tour selection of any company—get your FREE 50-page tour book now.

PLAN NOW!
—accommodation on these popular tours is limited—
for your free tour programme—

BELLEVILLE TRAVEL SERVICE

The Happiest Trips... Begin Here!

PL 1-2727

216 Washington Ave., Belleville, N. J.

FREE

Please send me FREE COPY of your 50 page 1960 Europe Booklet

NAME

ADDRESS

CITY or TOWN

STANDINGS

| TEAMS | W | L |
|-------------------|-----|-----|
| Sparkplugs | 42 | 15 |
| Beatniks | 39 | 18 |
| Olympics | 35 | 22 |
| Spectacular Three | 35 | 22 |
| Fire Bugs | 35 | 22 |
| Suburban Jets | 34 | 23 |
| The Three "A's" | 34 | 23 |
| Head Heads | 34 | 23 |
| Hi-Lo's | 32 | 25 |
| Newsters | 31 | 26 |
| Beginners Luck | 31 | 26 |
| The Three Sports | 30 | 27 |
| The Three Belles | 29 | 28 |
| The Three Jokers | 28 | 29 |
| Forget Me Knots | 27½ | 29½ |
| Chicks | 27½ | 29½ |
| Sad Sacks | 27 | 30 |
| Lucky 13 | 26½ | 30½ |
| The Three Queens | 26 | 31 |
| Sparkettes | 25 | 32 |
| Legion | 24 | 33 |
| The Belles | 23 | 34 |
| Pioneers | 23 | 34 |
| Diavolos | 21½ | 35½ |
| Gutterballs | 21 | 36 |
| The Three Aces | 21 | 36 |
| The Rockets | 15 | 42 |
| Beginners | 9 | 48 |

Sparkplugs Still Hot

The Sparkplugs are still maintaining their number one position in the Recreation Housewives Bowling League, the second place Beatniks, although fighting hard are still three games behind. Marie Gorman of the Spark Plugs is still high girl in the League, with her high average, 148, high game 203 and high series 522. Ann Somma of the Suburban Jets rolled high total pins 808.

The girls roll every Thursday afternoon at one at Olympic Lanes.

STANDINGS

| TEAMS | W | L |
|-------------------|-----|-----|
| Sparkplugs | 42 | 15 |
| Beatniks | 39 | 18 |
| Olympics | 35 | 22 |
| Spectacular Three | 35 | 22 |
| Fire Bugs | 35 | 22 |
| Suburban Jets | 34 | 23 |
| The Three "A's" | 34 | 23 |
| Head Heads | 34 | 23 |
| Hi-Lo's | 32 | 25 |
| Newsters | 31 | 26 |
| Beginners Luck | 31 | 26 |
| The Three Sports | 30 | 27 |
| The Three Belles | 29 | 28 |
| The Three Jokers | 28 | 29 |
| Forget Me Knots | 27½ | 29½ |
| Chicks | 27½ | 29½ |
| Sad Sacks | 27 | 30 |
| Lucky 13 | 26½ | 30½ |
| The Three Queens | 26 | 31 |
| Sparkettes | 25 | 32 |
| Legion | 24 | 33 |
| The Belles | 23 | 34 |
| Pioneers | 23 | 34 |
| Diavolos | 21½ | 35½ |
| Gutterballs | 21 | 36 |
| The Three Aces | 21 | 36 |
| The Rockets | 15 | 42 |
| Beginners | 9 | 48 |

SEE EUROPE FOR ONLY \$12 DAILY



INCLUDING MEALS

See all the fascinating parts of Europe the comfortable way... the Global Tour way. Just \$12 daily gives you the relaxed comfort of a luxurious motorcade, accommodation in pleasant hotels, all of your meals, sightseeing tours, luggage handling, a tour escort, and even tipping!

On any of the wonderful Global Tours you will see more, learn more, have far more fun in the group than by travelling alone. On a Global Tour you don't have to do a thing except enjoy yourself.

Take your choice from the biggest and best tour selection of any company—get your FREE 50-page tour book now.

PLAN NOW!
—accommodation on these popular tours is limited—
for your free tour programme—

BELLEVILLE TRAVEL SERVICE

The Happiest Trips... Begin Here!

PL 1-2727

216 Washington Ave., Belleville, N. J.

FREE

Please send me FREE COPY of your 50 page 1960 Europe Booklet

NAME

ADDRESS

CITY or TOWN

STANDINGS

| TEAMS | W | L |
|-------------------|-----|-----|
| Sparkplugs | 42 | 15 |
| Beatniks | 39 | 18 |
| Olympics | 35 | 22 |
| Spectacular Three | 35 | 22 |
| Fire Bugs | 35 | 22 |
| Suburban Jets | 34 | 23 |
| The Three "A's" | 34 | 23 |
| Head Heads | 34 | 23 |
| Hi-Lo's | 32 | 25 |
| Newsters | 31 | 26 |
| Beginners Luck | 31 | 26 |
| The Three Sports | 30 | 27 |
| The Three Belles | 29 | 28 |
| The Three Jokers | 28 | 29 |
| Forget Me Knots | 27½ | 29½ |
| Chicks | 27½ | 29½ |
| Sad Sacks | 27 | 30 |
| Lucky 13 | 26½ | 30½ |
| The Three Queens | 26 | 31 |
| Sparkettes | 25 | 32 |
| Legion | 24 | 33 |
| The Belles | 23 | 34 |
| Pioneers | 23 | 34 |
| Diavolos | 21½ | 35½ |
| Gutterballs | 21 | 36 |
| The Three Aces | 21 | 36 |
| The Rockets | 15 | 42 |
| Beginners | 9 | 48 |

Sparkplugs Still Hot

The Sparkplugs are still maintaining their number one position in the Recreation Housewives Bowling League, the second place Beatniks, although fighting hard are still three games behind. Marie Gorman of the Spark Plugs is still high girl in the League, with her high average, 148, high game 203 and high series 522. Ann Somma of the Suburban Jets rolled high total pins 808.

The girls roll every Thursday afternoon at one at Olympic Lanes.

STANDINGS

| TEAMS | W | L |
|-------------------|-----|-----|
| Sparkplugs | 42 | 15 |
| Beatniks | 39 | 18 |
| Olympics | 35 | 22 |
| Spectacular Three | 35 | 22 |
| Fire Bugs | 35 | 22 |
| Suburban Jets | 34 | 23 |
| The Three "A's" | 34 | 23 |
| Head Heads | 34 | 23 |
| Hi-Lo's | 32 | 25 |
| Newsters | 31 | 26 |
| Beginners Luck | 31 | 26 |
| The Three Sports | 30 | 27 |
| The Three Belles | 29 | 28 |
| The Three Jokers | 28 | 29 |
| Forget Me Knots | 27½ | 29½ |
| Chicks | 27½ | 29½ |
| Sad Sacks | 27 | 30 |
| Lucky 13 | 26½ | 30½ |
| The Three Queens | 26 | 31 |
| Sparkettes | 25 | 32 |
| Legion | 24 | 33 |
| The Belles | 23 | 34 |
| Pioneers | 23 | 34 |
| Diavolos | 21½ | 35½ |
| Gutterballs | 21 | 36 |
| The Three Aces | 21 | 36 |
| The Rockets | 15 | 42 |
| Beginners | 9 | 48 |

SEE EUROPE FOR ONLY \$12 DAILY



INCLUDING MEALS

See all the fascinating parts of Europe the comfortable way... the Global Tour way. Just \$12 daily gives you the relaxed comfort of a luxurious motorcade, accommodation in pleasant hotels, all of your meals, sightseeing tours, luggage handling, a tour escort, and even tipping!

On any of the wonderful Global Tours you will see more, learn more, have far more fun in the group than by travelling alone. On a Global Tour you don't have to do a thing except enjoy yourself.

Take your choice from the biggest and best tour selection of any company—get your FREE 50-page tour book now.

PLAN NOW!
—accommodation on these popular tours is limited—
for your free tour programme—

BELLEVILLE TRAVEL SERVICE

The Happiest Trips... Begin Here!

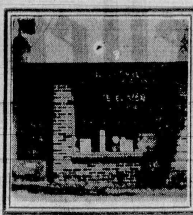
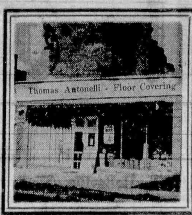
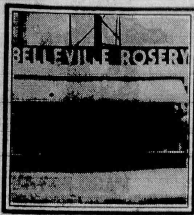
PL 1-2727

216 Washington Ave., Belleville, N. J.

FREE

Please send me FREE COPY of your 50 page 1960 Europe Booklet

NAME



1

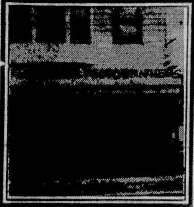
2

3

4

5

6



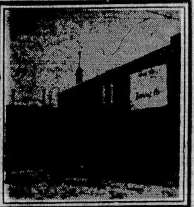
36

Kondreck Photographers
877 Washington Ave.



35

Di Bella Men's Shop
155 Washington Ave.



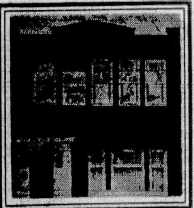
34

Zincola's Bakery
King St. Near Union Ave., Nutley



33

Bigelow Motors
80-84 Washington Ave.

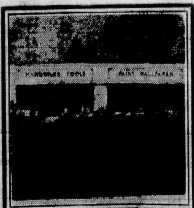


Mary's Alteration Shop
253 Washington Ave.



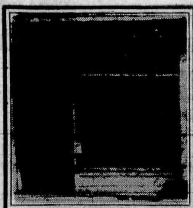
31

Cordasco Furniture Co.
80 Washington Ave.



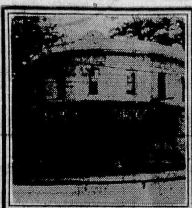
30

The Glass Co.
884 Washington Ave.



29

Belleville Travel Service
346 Washington Ave.



28

Laterza's Drugs
815 Union Ave.



27

Muscara Music Co.
814 Washington Ave.



26

Rug Shop
157 Washington Ave.



25

Logan Auto Radiator Co.
188 Main St.

Alterations
MARY'S ALTERATION SHOP

Automobiles
46-BORGWARD - BLUE & WHITE SALES
15-BUICK - Lark - BELLEVILLE-NUTTLEY BUICK
33-CHRYSLER-PLYMOUTH - BIGELOW MOTORS

Auto Body and Fender Repairs
39-NICOLETTE AUTO BODY WORKS

Baked Goods
7-GOECKLER'S QUALITY BAKERY
34-ZINCOLA'S BAKERS

Cleaning-Pressing-Repairing
12-JOLLY CLEANERS

Department Stores
40-THE BOSTON STORE
6-HARRY'S

Donuts & Delicatessen
9-BELLE MAID DONUT SHOP

Drugs
21-ABBOTT'S DRUG STORE
16-REED'S DRUGS
38-LATERZA'S DRUGS

Electrical Appliances - TV
45-JERSEY APPLIANCE

Floor Covering
3-THOMAS ANTONELLI FLOOR COVERING

Florists
1-BELLEVILLE ROSERY

Foods
24-ROYAL SHOP-RITE

Footwear-Men's/Women's
28-PAUL'S SHOE SHOPS
5-TANNEN'S SHOE SHOP

Fuel Oil
41-HILLTOP-RIVIERA OIL CO.

Furniture
31-CORDASCO FURNITURE CO.
32-FARISO BROS.

Garden Center
10-JO-LEE NURSERY & GARDEN CENTER

Hardware
2-TIBER HARDWARE

Home Improvements - Alum. Siding
14-KING OF BELLEVILLE

Home Newspaper Delivery Service
ED VAN DEMARK

Jewelers
22-W. T. HART

Kitchen Cabinets
47-LOMBARDI CABINET CO.

Mattresses
8-CUSTOM MATTRESS MAKERS

Meats - Poultry - Vegetables
43-GARDEN MEAT MARKET

Men's Furnishings
19-LOUNGE MEN'S SHOP
25-DE ZELLA MEN'S SHOP

Music
27-MUSCARA MUSIC CO.

Optician
15-WILLIAM C. SMITH

Photographers
36-KONDRACK PHOTOGRAPHERS

Pizza - Free Delivery
38-SENATORE'S PIZZERIA

Radiator Repair
25-LOGAN AUTO RADIATOR CO.

Real Estate - Insurance
29-C. A. ORECCHIO & CO.

Restaurant
17-STEFANI'S DINER

Rugs
26-RUG SHOP

Stationers
42-THE CRESCENT PRESS

Travel Service
29-BELLEVILLE TRAVEL SERVICE

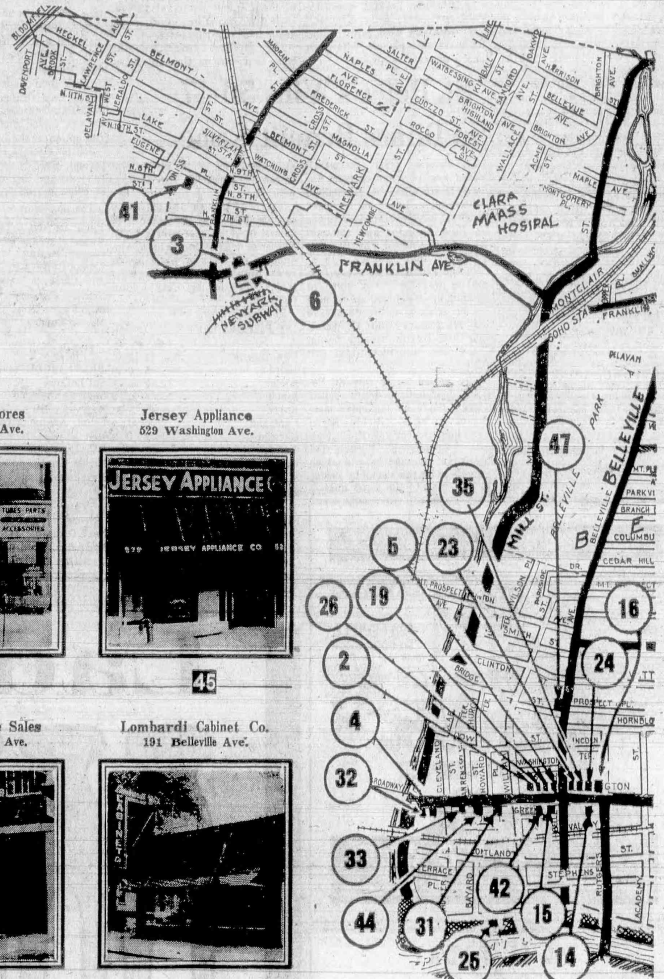
TV Parts
44-TELEVALUE STORES (Belor's)

TV Repairs
4-BELLEVILLE TV SERVICE

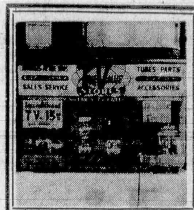
U.S. Times
11-WALLACE TIRE & SERVICE

Wallpaper - Paints - Glass
30-THE GLASS CO.

If you can't find what you want in this directory, please turn to the classified pages.

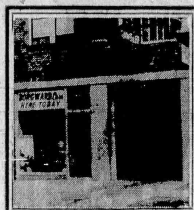


Televalue Stores
74 Washington Ave.



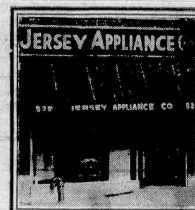
44

Blue and White Sales
468 Washington Ave.



46

Jersey Appliance
529 Washington Ave.



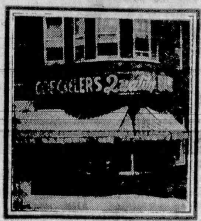
45

Lombardi Cabinet Co.
191 Belleville Ave.



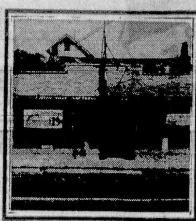
47

Goekler's Quality Bakery
383 Washington Ave. cor. Joralemon



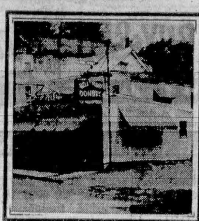
7

Custom Mattress Makers
85 Franklin Ave., Nutley



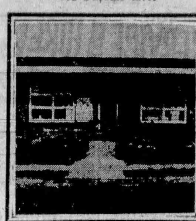
8

Belle Maid Donut Shop
460 Joralemon St.



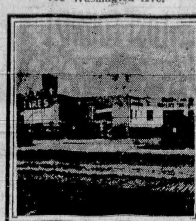
9

Jo-Lee Nursery
133 Passaic Ave.



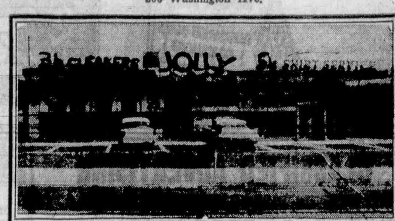
10

Wallace Tire & Service
709 Washington Ave.



11

Jolly Cleaners
800 Washington Ave.



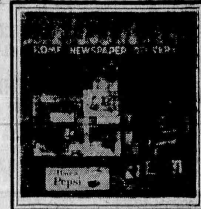
12

Pariso Bros.
16 Washington Ave.



32

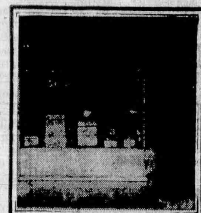
Who Is He? Where Is He?
Cooperating Merchant:
DiBella Men's Shop



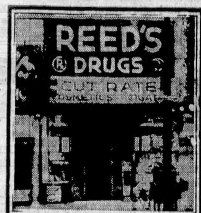
Ed Van Denmark
163 Washington Ave.



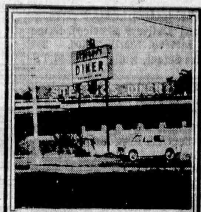
King of Belleville
164 Washington Ave.



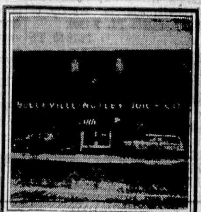
William C. Smith
140 Washington Ave.



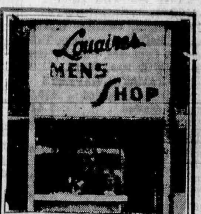
Reed's Drugs
183 Washington Ave.



Stefano's Diner
Park Ave. and River Rd., Nutley



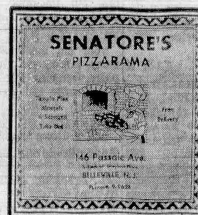
Belleville-Nutley Buick Co.
66 Washington Ave.



Louaires Men's Shop
137 1/2 Washington Ave.



Senatore's Pizzeria
PL 9-9623



38

Nicolette Auto Body Works
177 Passaic Ave.



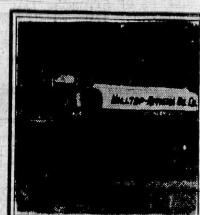
39

The Boston Store
638-540 Washington Ave.



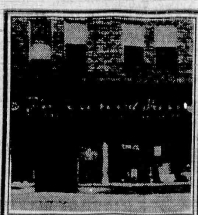
40

Hilltop-Riviera Oil Co., Inc.
48 Eugene Pl.



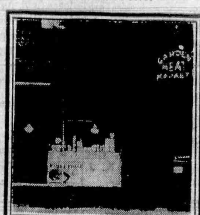
41

The Crescent Press
126 Washington Ave.



42

Garden Meat Market
166 Garden Ave.



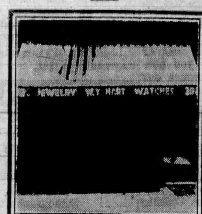
43



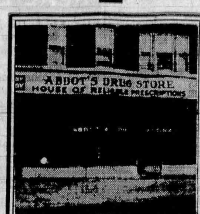
Royal Shop-Rite
189 Washington Ave



Paul's Shoe Shops
153 Washington Ave.



W. T. Hart
292 Washington Ave.



Abbott's Drug Store
531 Washington Ave.



Carl A. Orechio, Real Estate
43 Washington Ave.

WANT ADS

THE MARKET PLACE
OF MILLIONS

PL 9-3200

CLASSIFIED ADVERTISING

Adv. will appear in The Nutley Sun and
Belleville Times-News

Over 56,000 Readers

25 WORDS OR LESS 1.75
Each Additional Word 8c25 WORDS OR LESS THREE TIMES 4.00
Each Additional Word 16c

Annual Rate 1.25 Per Week

Ads Must Be In By 12 Noon Tuesday

ACCOUNTING

INCOME TAX at your business
or home. Monthly accounting.
Call Edison 8-7426. Howard J.
Chadwick, 27 Overlook Terrace,
Bloomfield, N. J. 4-13
ACCOUNTING - Taxes, Book-
keeping. Reasonable. Part
time, evenings, Saturday. Phone
NORTH 1-7342. 2-9

PERSONAL INCOME TAX forms
prepared. Private confidential
service. Call between 6 P.M. and
9 P.M. Monday through Friday
all day Saturday, Sunday for ap-
pointment. Plymouth 9-6221. 4-6

INCOME TAX RETURNS PRE-
PARED. Personal and business.
Strictly confidential. Plymouth
9-9477. 2-22

TAX RETURNS - Bookkeeping,
typing service. Part time. Eve-
nings, Saturdays. Phone NORTH
1-7342. 3-2

AGRICULTURE
SCREENED TOP SOIL - FILL
Excavating, landscaping, sod-
ding, land clearing. Let us solve
your drainage problem. Tru-
ner, bulldozer, and truck trailers.
Armando Vocatore - telephone
Plymouth 9-6640. 3-6 58 TF

ALUMINUM
SIDING
BEAUTIFY YOUR HOME with
aluminum siding; also store
fronts and aluminum signs and
casing covers. Call KING OF
BELLEVILLE, 164 Washington
Avenue, Belleville, PL 9-1611.
1-12-61 TF

ALUMINUM
REPAIRS
ALUMINUM GLASS and screens
repaired; also headquarters for
addies, door closers, window
blinds, knob sets, grilles, etc.
KING OF BELLEVILLE, 164
Washington Ave., Belleville,
PL 9-1611. 1-12-61 TF

Announcement
PLAZA LAUNDROMAT - (Pick-
up and Delivery Service). Same
day service. NORTH 10-1033. 238
Centre Street, Nutley. 12-13-60

ATTENTION! For that new look
in clothes, call PLAZA
FRENCH CLEANERS, 206 Cen-
tre Street, North 1-2106. Same
Day Service. Free Proofreading.
4-23-59 TF

ANSWERING
SERVICE
24 HOUR TELEPHONE AN-
SWERING SERVICE. Call for
information for special service in-
cluding WAKE-UP, VACATION
and MAIL address. Weekly or
monthly rates. PL 9-7650.
12-10-59 TF

AUTO
SERVICE
COLLISION SPECIALISTS
STRAIGHTENING, PAINT-
ING, lacquer, enamel, hite, El-
ectric welding, chassis work, fi-
ber glass work. AL'S RIVER-
SIDE B O D Y & FENDER
WORKS, 221 Valley Street, Bel-
leville, PL 9-1162. 12-17-59 TF

ALL AUTO REPAIRS
Pay As You Ride
MOTOR OVERHAUL \$19.95
New Engines, Gearboxes, Clutch
Carburetor, Hot Rod Bearings, Pump
Motor, 6 Cylinders, one-Day Ser-
vice; 8 Cylinders, \$59.95.
HYDRAMATIC EXPERTS
Transmission Rebuilt \$19.95
Brake Adjusters \$14.95
Transmission Overhauled \$27.95
PAINTING, BODY WORK
Any car painted as low as
\$27.95; choice of colors; body
tender work; frames straight-
ened with BEAR precision equip-
ment.

LORIA'S GARAGE, INC.
73 Washington Ave., Belleville,
PL 1-2030
2-16-61 TF

DOES YOUR HOME NEED
PAINTING? John Cracyk
General Contractor. Interior and
exterior painting. Fully insured.
Free Estimates. Telephone NO
7-6040. 8-25-60 TF

PAINTING & DECORATING -
Quality work - Reasonable
prices, 32 years exp. Fully in-
sured. Only the best material
used. No job too small. Sweeney
& Son, Plymouth 9-9383. 7-26-60 TF

EWALD TORNEPOT, INC.
PAINTING & DECORATING
We give quality and service.
10 Jerome Ave., Belleville, N. J.
Plymouth 9-1235. 9-25-60 TF

PAINTING-DECORATING
IRVING ZUCKER
Serving Nutley since 1929
NORTH 1-7349 9-25-60 TF

DOES YOUR HOME NEED
PAINTING? John Cracyk
General Contractor. Interior and
exterior painting. Fully insured.
Free Estimates. Telephone NO
7-6040. 8-25-60 TF

DOM INNAMORATO - Paint-
ing and Paperhanging. Long ex-
perience. Clean, neat work. Esti-
mates given. Plymouth 9-1169.
12-22-60 TF

GUY SYMPER - DECORATOR
-Painting, Paperhanging, Rea-
sonable prices. 170 Linden Av-
enue, Belleville, Call NORTH 7-
9-8070. 9-8-60 TF

JOHN MISIA, PAINTER AND
DECORATOR. Also paperhang-
ing. Estimates cheerfully given.
Fully insured. Telephone NORTH
1-7679. 7-21-60 TF

PAINTING-DECORATING
IRVING ZUCKER
Serving Nutley since 1929
NORTH 1-7349 9-25-60 TF

DOES YOUR HOME NEED
PAINTING? John Cracyk
General Contractor. Interior and
exterior painting. Fully insured.
Free Estimates. Telephone NO
7-6040. 8-25-60 TF

DOM INNAMORATO - Paint-
ing and Paperhanging. Long ex-
perience. Clean, neat work. Esti-
mates given. Plymouth 9-1169.
12-22-60 TF

GUY SYMPER - DECORATOR
-Painting, Paperhanging, Rea-
sonable prices. 170 Linden Av-
enue, Belleville, Call NORTH 7-
9-8070. 9-8-60 TF

JOHN MISIA, PAINTER AND
DECORATOR. Also paperhang-
ing. Estimates cheerfully given.
Fully insured. Telephone NORTH
1-7679. 7-21-60 TF

PAINTING-DECORATING
IRVING ZUCKER
Serving Nutley since 1929
NORTH 1-7349 9-25-60 TF

DOES YOUR HOME NEED
PAINTING? John Cracyk
General Contractor. Interior and
exterior painting. Fully insured.
Free Estimates. Telephone NO
7-6040. 8-25-60 TF

DOM INNAMORATO - Paint-
ing and Paperhanging. Long ex-
perience. Clean, neat work. Esti-
mates given. Plymouth 9-1169.
12-22-60 TF

GUY SYMPER - DECORATOR
-Painting, Paperhanging, Rea-
sonable prices. 170 Linden Av-
enue, Belleville, Call NORTH 7-
9-8070. 9-8-60 TF

JOHN MISIA, PAINTER AND
DECORATOR. Also paperhang-
ing. Estimates cheerfully given.
Fully insured. Telephone NORTH
1-7679. 7-21-60 TF

PAINTING-DECORATING
IRVING ZUCKER
Serving Nutley since 1929
NORTH 1-7349 9-25-60 TF

DECORATORS -

PAINTERS

ALTERATIONS
Block & Acoustic Ceilings
Painting & Paperhanging
(Home & Industrial)
Wyman 1-8755. 2-18-60 TF

SPECIAL - I will hang the
room for only \$8.95. D. D.
EMILIO, 12 Brown St. Tele-
phone North 7-9325. 11-1-60 TF

ELECTRICIANS
CALL US FOR PROMPT and
complete electrical service.
D. & P. Electric, 39 Ralph
Street, Belleville. Telephone
Plymouth 1-2782. 11-1-60 TF

GEORGE H. HEWITT & SON
Electrical Contractors
Successors to Harold Kane
North 7-0020 21 Hamilton Pl.
10-15-53 H

BELLO'S ELECTRIC SERVICE
Complete home wiring. Alter-
ations and repairs. We special-
ize in 100 Amp. 220 line
PL 9-7964. Call anytime for free
estimate. 1-14-60 TF

ALL TYPES of electrical work
done. All work guaranteed. Tele-
phone North 7-0140. Bill Mar-
see, 22 Hopper Avenue. 1-20-55 TF

FRED M. SMITH
LICENSED ELECTRICIAN
Power & Light Wiring
Residential - Commercial -
Industrial. 1-20-55 TF

Pole & Line Construction
NORTH 1-1443
7-21-60 TF

DO YOU HAVE ENOUGH
CURRENT in your home?
220 Volts 60-80-100 Amp. service
line installed. George M. Don-
ough. Telephone North 7-8272.
7-24-58 TF

LIVE BETTER ELECTRIC
ALLY with full housepower.
For free estimate phone Las-
son's Electric Service, 638 Bel-
leville Avenue, Belleville. 24
Hour Answering Service. Ply-
mouth 9-9252. 8-27-57 TF

ELECTRICAL CONTRACTING -
Residential, Commercial, In-
dustrial. Old houses, rewiring &
specialty. No job too small or
large. No charge for estimates.
J. Pierson, North 7-9375. 4-21-55 TF

FLOOR
SERVICE
FLOORS SANDED, REFIN-
ISHED, cleaned and waxed.
American Floor Sanding Com-
pany, Lyndhurst, George Inglis
Telephone GEneva 8-1212. 2-9-51 TF

Floors Laid, Sanded, Finished,
Cleaned, Wax, Polished
For Better Work Call
IVAR BRANDSTEDT
North 7-0327 185 Coeyman Ave.
1-24-61 TF

FOUR ROOM APARTMENT
Heat supplied. Modern kitchen
tile bath. Available April 1. Tele-
phone North 7-0994 after 6 P.M.
2-16-61 TF

CLIFTON - Three Rooms, heat
and hot water, electricity and
gas supplied. One block to trans-
portation. \$85. March 1st. Pres-
cott 8-2217. 2-22-61 TF

FIVE ROOM APARTMENT.
Cold water flat. Available
March 1st. \$60 per month. 111
Bloomfield Avenue, Nutley. Tele-
phone PL 6-7677 or PL 6-0683. 2-23-61 TF

FOUR ROOM APARTMENT
WITH BATH. Heat and hot wa-
ter furnished. Third floor. Adults
preferred. Telephone Plymouth
9-1621. 2-23-61 TF

FOUR ROOM APARTMENT.
Heat supplied. Modern kitchen
tile bath. Available April 1. Tele-
phone North 7-0994 after 6 P.M.
2-16-61 TF

CLIFTON - Three Rooms, heat
and hot water, electricity and
gas supplied. One block to trans-
portation. \$85. March 1st. Pres-
cott 8-2217. 2-22-61 TF

FIVE ROOM APARTMENT.
Cold water flat. Available
March 1st. \$60 per month. 111
Bloomfield Avenue, Nutley. Tele-
phone PL 6-7677 or PL 6-0683. 2-23-61 TF

FOUR ROOM APARTMENT
WITH BATH. Heat and hot wa-
ter furnished. Third floor. Adults
preferred. Telephone Plymouth
9-1621. 2-23-61 TF

FOUR ROOM APARTMENT.
Heat supplied. Modern kitchen
tile bath. Available April 1. Tele-
phone North 7-0994 after 6 P.M.
2-16-61 TF

CLIFTON - Three Rooms, heat
and hot water, electricity and
gas supplied. One block to trans-
portation. \$85. March 1st. Pres-
cott 8-2217. 2-22-61 TF

FIVE ROOM APARTMENT.
Cold water flat. Available
March 1st. \$60 per month. 111
Bloomfield Avenue, Nutley. Tele-
phone PL 6-7677 or PL 6-0683. 2-23-61 TF

FOUR ROOM APARTMENT
WITH BATH. Heat and hot wa-
ter furnished. Third floor. Adults
preferred. Telephone Plymouth
9-1621. 2-23-61 TF

FOUR ROOM APARTMENT.
Heat supplied. Modern kitchen
tile bath. Available April 1. Tele-
phone North 7-0994 after 6 P.M.
2-16-61 TF

CLIFTON - Three Rooms, heat
and hot water, electricity and
gas supplied. One block to trans-
portation. \$85. March 1st. Pres-
cott 8-2217. 2-22-61 TF

FIVE ROOM APARTMENT.
Cold water flat. Available
March 1st. \$60 per month. 111
Bloomfield Avenue, Nutley. Tele-
phone PL 6-7677 or PL 6-0683. 2-23-61 TF

FOUR ROOM APARTMENT
WITH BATH. Heat and hot wa-
ter furnished. Third floor. Adults
preferred. Telephone Plymouth
9-1621. 2-23-61 TF

FOUR ROOM APARTMENT.
Heat supplied. Modern kitchen
tile bath. Available April 1. Tele-
phone North 7-0994 after 6 P.M.
2-16-61 TF

CLIFTON - Three Rooms, heat
and hot water, electricity and
gas supplied. One block to trans-
portation. \$85. March 1st. Pres-
cott 8-2217. 2-22-61 TF

FIVE ROOM APARTMENT.
Cold water flat. Available
March 1st. \$60 per month. 111
Bloomfield Avenue, Nutley. Tele-
phone PL 6-7677 or PL 6-0683. 2-23-61 TF

FOUR ROOM APARTMENT
WITH BATH. Heat and hot wa-
ter furnished. Third floor. Adults
preferred. Telephone Plymouth
9-1621. 2-23-61 TF

FOUR ROOM APARTMENT.
Heat supplied. Modern kitchen
tile bath. Available April 1. Tele-
phone North 7-0994 after 6 P.M.
2-16-61 TF

CLIFTON - Three Rooms, heat
and hot water, electricity and
gas supplied. One block to trans-
portation. \$85. March 1st. Pres-
cott 8-2217. 2-22-61 TF

FIVE ROOM APARTMENT.
Cold water flat. Available
March 1st. \$60 per month. 111
Bloomfield Avenue, Nutley. Tele-
phone PL 6-7677 or PL 6-0683. 2-23-61 TF

FOUR ROOM APARTMENT
WITH BATH. Heat and hot wa-
ter furnished. Third floor. Adults
preferred. Telephone Plymouth
9-1621. 2-23-61 TF

FOUR ROOM APARTMENT.
Heat supplied. Modern kitchen
tile bath. Available April 1. Tele-
phone North 7-0994 after 6 P.M.
2-16-61 TF

CLIFTON - Three Rooms, heat
and hot water, electricity and
gas supplied. One block to trans-
portation. \$85. March 1st. Pres-
cott 8-2217. 2-22-61 TF

FIVE ROOM APARTMENT.
Cold water flat. Available
March 1st. \$60 per month. 111
Bloomfield Avenue, Nutley. Tele-
phone PL 6-7677 or PL 6-0683. 2-23-61 TF

FOR RENT

FOR RENT

BELLEVILLE - Beautiful large
1 1/2 room apartment. Separate
ultra modern kitchenette, Mur-
phy bed. Modern elevator apart-
ment building. Exclusive resi-
dential section. Near buses. \$75
monthly. See Superintendant, 208
Union Avenue, PL 1-0189. 2-23

CLIFTON - THREE ROOMS
plus storage room. Heat, hot
water, gas and electricity sup-
plied. March or April. \$85. Tele-
phone Prescott 8-2217. 2-23

SIX ROOM APARTMENT, New
kitchen, new bath, first floor.
Heat and hot water, garage.
\$130 a month. March 1st.
JACOBS REALTY CO., Realtors
484 Washington Ave. PL 9-3050

BLOOMFIELD - Modern 3 1/2
room garden apartment. Refrig-
erator, range, heat and hot water
supplied. Tile bath, spacious liv-
ing room. \$93. 206 Davies Street.
PL 8-3380. 2-23

33-Have your gut, gutters
leaders and flashings inspec-
ted. Any small, minor repair in-
cluded. Aluminum combination
windows and doors. General
house maintenance. Please call
before 8:30 A.M. or after 6 P.M.
M. T. K. Oakes, North 7-2564
4-3-58 TF

USED DESKS, \$15 up. Filing
cabinets, chairs and tables. Ed-
elstein Office Furniture W a r e-
house, 200 Montgomery Street,
Paterson, N. J. Lambert 3-6133.
5-26-60 TF

RUGS - NEVER USED. Sacrifice
to settle estate. 9 x 12, 90 x
9 x 15, \$35. Other sizes. GE VACU-
um, \$20. Also some wool hooked
and braided rugs. Call SO 2-1319.
12-10-60 TF

LAMPS, PICTURES
REPAIRED
Lamps from vases, etc. Lamp
parts, shades, bases. Bargains
in Driftwood & custom lamps.
Fluorescent fixtures, Circles,
fluorescent lamps & parts. Shop-
lite, 638 Franklin Ave., North
7-0021. Unit 730 P.M. 15-50 TF

IT REALLY PAYS TO REPAIR
your old appliances. Tools, fi-
rons, lamps, etc. Guaranteed re-
pairs, sensible low prices. Phil-
ips, Monroe and Myrtle, Passaic.
GREGORY 3-5667. 12-8-60 TF

REMNANTS OF SLIP COVERS
and drapery material. Custom-
made slip covers and upholstery
at low prices. Art Decorators,
156 Franklin Avenue, Nutley.
North 7-4777. 1-19-61 TF

WELL ROTTED COW MANURE
By the load. \$20 per bag. Bon-
ny Del Farms. Telephone Web-
ster 9-6109. 11-3-60 TF

COOKWARE - SACRIFICE to
settle estate of former dealer.
We have a very large stock of
stainless steel water kettles, cool-
ware. Regular value \$149.50. Sac-
rifice \$39.50. Call SO 2-1319.
12-10-60 TF

AFRICAN VIOLETS - GIRL
plants \$1.50 - \$2.50. Small
plants 50c and 75c. Special rates
to clubs and organizations.
Doris's African Violet Center,
308 Franklin Street, Bloomfield.
Telephone PL 8-5485. Open
Sunday to 5 P.M. 7-26-60 TF

SOFA, CUSTOM SLIP COVERS,
\$35; coffee table \$7; piece
bedroom set \$90; dresser, vanity
bed, spring, mattress, \$40. No
7-6861. 1 Stewart Avenue, Nut-
ley. 2-16-61 TF

LEATHER CARRIAGE, \$25;
Westinghouse roaster oven with
complete base \$20; table and
chair set, chrome, \$15, high
chair \$5. Plymouth 9-9419 after
morning. 2-16-61 TF

CLUB SIDE DIVAN, bed for 2;
two matching chairs. Ideal for
den or summer cottage. Also six
28" venetian blinds. Good con-
dition. Reasonable. North 7-1933 af-
ter 5 p.m. 2-23-61 TF

CEMETERY PLOT - Four
graves, in Crest Haven Memori-
al Park. Value \$500. Will sell
for \$300. Telephone North 7-4759.
2-16-61 TF

NUTLEY KING KONE - Porta-
ble building. Soft ice cream
equipment. Telephone PL 8-
6740. 2-16-61 TF

FOR SALE -
REAL ESTATE
BUY SELL OR TRADE Invest-
igate our trade in plan. We
have a large stock of houses for
consider buying it. If you pur-
chase another house through our
office. Let us know your require-
ments. Evenings and Holidays
call MR. STANLEY JOHNSON.
2-16-61 TF

28 High Street North 7-8000
9-10-60 TF

NUTLEY-LOT-50 x 100, suit-
able retail business, corner
Avenue, North (adjacent to
Chatterbox), North 7-9697 or in-
quire Chatterbox, 242 Washington
Avenue, Nutley. 12-20-50 TF

FOR SALE -
REAL ESTATE
BUY SELL OR TRADE Invest-
igate our trade in plan. We
have a large stock of houses for
consider buying it. If you pur-
chase another house through our
office. Let us know your require-
ments. Evenings and Holidays
call MR. STANLEY JOHNSON.
2-16-61 TF

28 High Street North 7-8000
9-10-60 TF

NUTLEY-LOT-50 x 100, suit-
able retail business, corner
Avenue, North (adjacent to
Chatterbox), North 7-9697 or in-
quire Chatterbox, 242 Washington
Avenue, Nutley. 12-20-50 TF

FOR SALE -
REAL ESTATE
BUY SELL OR TRADE Invest-
igate our trade in plan. We
have a large stock of houses for
consider buying it. If you pur-
chase another house through our
office. Let us know your require-
ments. Evenings and Holidays
call MR. STANLEY JOHNSON.
2-16-61 TF

28 High Street North 7-8000
9-10-60 TF

NUTLEY-LOT-50 x 100, suit-
able retail business, corner
Avenue, North (adjacent to
Chatterbox), North 7-9697 or in-
quire Chatterbox, 242 Washington
Avenue, Nutley. 12-20-50 TF

FOR SALE -
REAL ESTATE
BUY SELL OR TRADE Invest-
igate our trade in plan. We
have a large stock of houses for
consider buying it. If you pur-
chase another house through our
office. Let us know your require-
ments. Evenings and Holidays
call MR. STANLEY JOHNSON.
2-16-61 TF

28 High Street North 7-8000
9-10-60 TF

NUTLEY-LOT-50 x 100, suit-
able retail business, corner
Avenue, North (adjacent to
Chatterbox), North 7-9697 or in-
quire Chatterbox, 242 Washington
Avenue, Nutley. 12-20-50 TF

FOR SALE -
REAL ESTATE
BUY SELL OR TRADE Invest-
igate our trade in plan. We
have a large stock of houses for
consider buying it. If you pur-
chase another house through our
office. Let us know your require-
ments. Evenings and Holidays
call MR. STANLEY JOHNSON.
2-16-61 TF

28 High Street North 7-8000
9-10-60 TF

NUTLEY-LOT-50 x 100, suit-
able retail business, corner
Avenue, North (adjacent to
Chatterbox), North 7-9697 or in-
quire Chatterbox, 242 Washington
Avenue, Nutley. 12-20-50 TF

FOR SALE -
REAL ESTATE
BUY SELL OR TRADE Invest-
igate our trade in plan. We
have a large stock of houses for
consider buying it. If you pur-
chase another house through our
office. Let us know your require-
ments. Evenings and Holidays
call MR. STANLEY JOHNSON.
2-16-61 TF

28 High Street North 7-8000
9-10-60 TF

NUTLEY-LOT-50 x 100, suit-
able retail business, corner
Avenue, North (adjacent to
Chatterbox), North 7-9697 or in-
quire Chatterbox, 242 Washington
Avenue, Nutley. 12-20-50 TF

FOR SALE -
REAL ESTATE
BUY SELL OR TRADE Invest-
igate our trade in plan. We
have a large stock of houses for
consider buying it. If you pur-
chase another house through our
office. Let us know your require-
ments. Evenings and Holidays
call MR. STANLEY JOHNSON.
2-16-61 TF

28 High Street North 7-8000
9-10-60 TF

NUTLEY-LOT-50 x 100, suit-
able retail business, corner
Avenue, North (adjacent to
Chatterbox), North 7-9697 or in-
quire Chatterbox, 242 Washington
Avenue, Nutley. 12-20-50 TF

FOR SALE -
REAL ESTATE
BUY SELL OR TRADE Invest-
igate our trade in plan. We
have a large stock of houses for
consider buying it. If you pur-
chase another house through our
office. Let us know your require-
ments. Evenings and Holidays
call MR. STANLEY JOHNSON.
2-16-61 TF

FOR SALE -

REAL ESTATE

LISTINGS WANTED!

BUYERS WAITING!

WHY DO WE SELL
SO MANY HOMES?

Town Bulletin Board

THURSDAY

12 noon — Belleville Lions Club — Christians Restaurant.

6:15 p.m. — Belleville Kiwanis Club — The Galaxy.

7:30 p.m. — OES Belleville Chapter — Masonic Temple.

7:30-9 p.m. — Belleville Adult School registration at high school.

8 p.m. — CYO — St. Peter's.

8 p.m. — VFW Younging Adult Post 215—Veterans Home.

8 p.m. — Fewsmith Senior Choir — Fewsmith Presbyterian.

8 p.m. — Essex County American Legion to hear State Commander Edward Wysocski speak at Newark Post 10 Home — 58 Lincoln Park, Newark.

8:15 p.m. — American Legion Auxiliary 105 — Belleville Legion Hall.

FRIDAY

1:30 p.m. — World Day of Prayer observance sponsored by Belleville Council of Church Women — Christ Episcopal Church.

7:30 p.m. — Choral Society—St. Peter's.

8 p.m. — CYO — St. Mary's.

8 p.m. — World Day of Prayer (see 1:30 p.m.)

8:15 p.m. — Senior Class — Silver Lake Baptist Church.

SATURDAY

8:30 p.m. — Fewsmith Couples Club — Fewsmith Presbyterian Church.

SUNDAY

2:30 p.m. — Holy Family Bowling League — Cardinal Lanes, Nutley.

6:30 p.m. — Fewsmith Junior Westminister Fellowship — Fewsmith Presbyterian Church.

7:30 p.m. — "Incest Struggle" Association.

7:30 p.m. — Belleville Protestant Youth Council meeting— Wesley Methodist Church.

7:45 p.m. — Fewsmith Senior Westminister Fellowship—Fewsmith Presbyterian Church.

MONDAY

7:30 - 9 p.m. Registration for Belleville Adult School—Belleville High School.

7:30 p.m. — PTA Three meeting. Bakers Dozen will entertain—School Three.

8 p.m. — American Legion Post 105—Legion Home.

8 p.m. — Belleville Chess Club— Recreation House.

8 p.m. — Independent Order of Odd Fellows Harmony Lodge 25 — Masonic Temple.

8 p.m. — PTA teachers program — School Five.

8 p.m. — PTA Meeting with high school board film "To Be or Not to Be." — School Seven.

8 p.m. — Belleville Board of Education organization meeting—School Eight.

8:30 p.m. — Knights of Columbus—Knights Home.

8:30 p.m. — Court Gracia Catholic Daughters Penny Party—Knights Hall, Nutley.

TUESDAY

7:30 p.m. — Bingo Games—St. Mary's Church Lower Hall.

RICHMOND

70¢

PL 9-1497

Dr. M. Roachvarg

OPTOMETRIST

BY APPOINTMENT 132 Washington Avenue
Belleville

CARL A. ORECHIO Agency

INSURANCE — REAL ESTATE

(2 Convenient Service Offices)

Telephone NO. 7-4000

43 Washington Ave. Nutley 386 Franklin Ave.

School Board Reports

Letters Praise Hired Architect

Five letters written by school superintendents and praising the work of Alfonso Alvarez, architect hired to draw plans and specifications for the proposed Belleville high school, were received Wednesday by Superintendent of Schools Evan Thomas.

Thomas said he solicited the letters to eliminate doubts surrounding alleged improprieties regarding Alvarez's work in some municipalities.

East Paterson was the municipality most frequently discussed at Wednesday's special school board meeting in Belleville. Dr. Frank W. DiRuggiero read newspaper clippings which reported Alvarez knew in advance that his cost figure for East Paterson's junior — senior high school would not cover the building's expenses. East Paterson voters finally had to approve a second referendum allocating additional sums to cover the school's cost.

Thomas read a letter from the East Paterson project came from T. A. Shoshen, formerly of the East Paterson school system and now superintendent of schools in Commack, N. Y. The letter noted the same board members who criticized Alvarez also denounced in public the Governor of New Jersey, the Bergen County prosecutor, the State Assembly as a group, Sen. Walter Jones of Bergen County and Dr. Felix McCormick who was the educational consultant for East Paterson. Dr. McCormick is presently serving as educational consultant to the Belleville Board of Education.

Other letters of praise for Alvarez came from Robert Hall, Nutley.

8 p.m. — PTA Nine with film "To Be or Not to Be," about new Belleville High School.

8 p.m. — Italian American War Veterans — Barbone Mosco Post 25 Harrison Street.

8 p.m. — Amvets Memorial Post 26 meeting — 198 Franklin Street.

8 p.m. — VFW E Edgar Stuart Post 493 — 265 Washington Avenue.

8 p.m. — Petrean Club — St. Peter's.

8:15 p.m. — School Eight PTA Founders Day Program—School 8 All-Purpose Room.

WEDNESDAY

Today, February 22 is Washington's Birthday, a legal holiday in New Jersey.

9:30 a.m. — Retired Men's Club — Fewsmith Presbyterian Church.

10 a.m. — 4 p.m. — Cancer Dressing Unit — Woman's Club.

12:15 p.m. — Rotary Club—For Hills.

3:45 p.m. — Fewsmith Junior Choir — Fewsmith Presbyterian Church.

7:30 p.m. — Belleville F and AM Lodge 108 — Masonic Temple.

7:30 p.m. — Bingo Games — American Legion Home.

7:30 p.m. — Bingo Games — Holy Family School Auditorium, Nutley.

8 p.m. — Radio Club — Recreation House.

8 p.m. — St. Mary's Theatre Guild — School Gymnasium, Nutley.

superintendent of Sparta schools, William F. Shershin, Clifton superintendent; Dr. Clarence Hinchey, Montclair superintendent; and W. F. Bolen, Dunellen superintendent.

Hall gave Alvarez an "unqualified recommendation." Alvarez did the work on Sparta's three million dollar addition to the town's senior high school.

Shershin said Alvarez's work was "completely satisfactory."

One of the most laudatory recommendations came from Dr. Hinchey in Montclair. Alvarez's own town, where he is presently finishing work on a three million dollar addition to the high school. Dr. Hinchey wrote that Alvarez "went beyond normal expectancy" in his work on the project and he added "no fault can be found with the technical services rendered" by the architect.

From Dunellen, Bolen wrote that Alvarez's cost estimates for the referendum on a new high school addition and alterations to the old building were correct.

Bolen said that he kept "within the time schedule" and that Alvarez was "quite prompt in following up complaints from the school board. One criticism which Bolen's letter gave concerned "engineering." But Bolen said that any discrepancies were expected to be corrected before a deadline date sometime this year.

Services were held Tuesday morning at 11 o'clock in the Arthur K. Brown Home, 56 Park Street, Montclair.

Mr. Lloyd would have been 81 next Sunday. He lived at 148 Saturday in his Upper Montclair home and was the donor of Braille Bibles to libraries in 15 states.

Born in Doylestown, Penna, he moved to Montclair 45 years ago. He had donated Braille Bibles to state public libraries for circulation by the Upper Montclair departments for the blind. In the past he had sent the St. James version of both the Old and New Testaments to 16 libraries in 15 states. His latest donation went to the Montclair Library, a five-volume set of the New Testament.

A hobbyist, Mr. Lloyd was an inveterate collector and on the walls of his 10 - room home hung such varied items as a license plate for the late Kaiser Wilhelm's car, a framed piece of burned toast (a family joke) and a collection of cocktail napkins and signatures of famous Americans.

He leaves a son, Van Voorhees of Saratoga Springs, N. Y.; a daughter, Mrs. William Bush of Essex Fells, a brother, Henry D. of Newton, Mass, and two grandchildren.

DiRuggiero Under Protest

(Continued From Page 1)

varez are signed.

Ernest Arvidson, board member, counteracted DiRuggiero's allegations Wednesday night by reaffirming the board's confidence in selecting Alvarez. A resolution was unanimously adopted with DiRuggiero abstaining, that "the board shall proceed to interview Mr. Alvarez with a view to consummating a contract as expeditiously as possible."

The resolution stated the contract should be negotiated because no evidence was presented which indicated that Alvarez was not competent or qualified to complete the work on the proposed Belleville high school.

Mr. Alvarez was not at Wednesday's session. The board's next regular meeting is this coming Monday at 8 p.m.

Election Returns

(Continued From Page 1)

145, Rochau, 210; budget, 143 yes, 98 no.

TOWN POOLS

Richard H. Drake 2,165. Lee H. Garson 1, 687, Arthur M. Pico 2,293. Mrs. Violet F. Rochau 1, 969; school budget, 1,634 yes, 1,708 no.

Complete Heating Systems

For All Your Heating Needs Call

PLYMOUTH 9-1907

46 Eugene Pl. Belleville

OUR FUEL OIL MAKES WARM FRIENDS

New now low cost installation prices.

Low cost service contract including parts coverage

Convenient monthly budget plan.

24 hour emergency service.

HILLTOP RIVIERA OIL CO., INC.

Aridson Would Censure

(Continued From Page 1)

ened to call in the prosecutor and require DiRuggiero to "tell everything you know under oath."

DiRuggiero's answer to Arvidson were the heated words, "Now you're showing your true color."

Schwartz told DiRuggiero that he agreed with him, "You should not have been compelled to give the information, you should have volunteered it." Schwartz said DiRuggiero then declared, "I'm on trial." He also said that a minority member of the board, "a minority of one, and have been so for the past year."

REPRESENTATION

DiRuggiero was denied representation at the meeting by counsel, Attorney Nicholas Brescia, who appeared in behalf of DiRuggiero, was permitted to speak only as a private citizen. Brescia is a Belleville resident and his name has appeared in newspapers frequently as attorney and a spokesman for both the Rutan Estates Homeowners' Association and the Fairway Civic Association. He spoke for about 45 minutes Wednesday night.

OUR CLASSIFIED ADS BRING QUICK RESULTS

Laboratory Reports" and "Functions of the Medical Examiner" with Dr. Edwin H. Albano.

March 28, "Modern Use of Re-suscitation Methods" with Dr. Eugene E. D'Alessandro.

April 4, "Current Trends in Psychiatric Practice" with Dr. Arnold M. Kallen.

April 11, "Pre - Operative and Post - Operative Care Including Chest and Cardiac Cases," with Dr. John J. McGuire and a panel discussion.

April 18, "Diet and Nutrition" with a panel including Dr. Harvey P. Einhorn and Mrs. Caroline Addison, a Red Cross nutritionist.

April 25, "How to Handle Chronically - Ill Patients" with Dr. John J. Terpey who is president of the Chirill Service Inc.

May 2, "Management of the Urlogical Patient" with Dr. Andrew R. Vernico.

No matter what you've been offered

LEARNARD

CHEVROLET

WILL BETTER THE DEAL!

SEE US TODAY

814 Washington Ave., BELLEVILLE

Open Evenings & Sundays, PL 8-4200

FREE! 50 GREEN STAMPS

In addition to your regular stamps with purchase of meat totaling \$3.00 or more and this coupon.

All Acme Markets Will Be Closed Washington's Birthday, Wednesday, February 22nd

shop

ACME

MARKETS

Lancaster Brand

STEAKS

Sirloin lb. 79¢ Porterhouse lb. 89¢

Lancaster Brand EZ Carve

RIB ROAST

Oven Ready lb. 79¢

Small Lean

Fresh Hams

Whole or Shank Half lb. 59¢ Butt Half lb. 63¢

shop

ACME

MARKETS

Hunts

Tomato Sauce 12 8 oz. pkgs. \$1.00

Hunts

Tomato Paste 10 6 oz. cans \$1.00

Hunts Stewed

Tomatoes 6 1 3/4 oz. cans \$1.00

Ideal Solid White

Tuna Fish 4 7-oz. cans \$1.00

Ken-L-Ration

Dog Food 6 16-oz. cans 85¢

Heinz

Ketchup 2 20-oz. bottle 29¢ 14-oz. bots. 43¢

Kleenex

Towels twin pack 33¢

Nabisco

Ritz Crackers 16-oz. pkg. 31¢

Lancaster Brand Cold Cut Sale

Sliced Bologna & Plain Loaf, Pickle & Pimento Loaf, Cooked Salami, Olive Loaf or Spiced Luncheon Meat 6-oz. pkg. 25¢

Frozen Foods for Lent

Seabrook Chopped Spinach 2 10-oz. pkgs. 27¢

Macaroni & Cheese Fancy 3 8-oz. pkgs. 47¢

Large Shrimp Sliced lb. 89¢

Halibut Steaks Sliced lb. 55¢

Cod Steaks lb. 39¢

Fresh Fish

Flounder Fillet lb. 89¢

Butterfish lb. 39¢

Haddock Fillet Pre-Cooked lb. 79¢

Fruits and Vegetables

Washington State Red Delicious Apples 10 for 59¢

Extra Large California Navel Oranges 10 for 59¢

Vine-Ripened Tomatoes lb. 19¢

Jersey Sweet Potatoes 3 lbs. 29¢

Hot House Rhubarb 2 lbs. 29¢

All advertised prices effective thru Saturday, February 18th

SHOP-RITE'S STATE-WIDE 10TH ANNIVERSARY SALE!

Help Your Child in School

The
GOLDEN BOOK
Illustrated
ENCYCLOPEDIA
Young People

- A brand new world of knowledge
- Every page in glorious color
- 15 years in the making

Volume 1 still on sale
only **49¢**
Volume 2 through 5
only **99¢**

BUY A BOOK-A-WEEK

**Anniversary Bonus Buys
From Our Dairy Departments!**

Shop-Rite
Cheese Loaf 2 **69¢**
lb. box

Cheese Slices Borden, Colored, White 12 oz. **39¢**
Pimento, Vera Sharp pkg.
Cottage Cheese Shop-Rite 25¢ Swiss Cheese Shop-Rite 69¢
Cream Cheese Borden's 8 oz. 29¢ Gruyere Slices Swiss 6 oz. 39¢
Leiderkranz Borden's 4 oz. 29¢ Muenster Cheese Sliced 59¢
Sour Cream Shop-Rite 12 oz. 42¢ Muenster Baby Cheese pkg. 53¢

**Celebrate and Save With These
Giant Deli Birthday Buys!**

Our Own Store, Sliced

BOILED HAM lb. **99¢**

Shop-Rite Hickory
Smoked Sliced Bacon lb. **53¢**
Picnic Hams Hormel 4 lb. can **\$2.59**
Hard Salami Hormel 4 oz. pkg. **43¢**
Sausage Meat Armour lb. **35¢**
Boiled Ham Hafnia, Imported 5-oz. pkg. **49¢**

**Celebrating 10 Years of Leadership in
Frozen Food Buys!**

Shop-Rite, Extra Fancy, Frozen

Sweet Peas 7 **\$1**
10 oz. pks.

Brussel Shop-Rite 5 10 oz. \$1
Fish Sticks Shop-Rite 4 8 oz. 99¢
Orange Juice Shop-Rite 5 6 oz. 99¢

For Tasty Lenten Menus

SHRIMP

Tender, Shell on U.S.D.I. Grade Breaded
2-lb. pkg. **1.29** 1 1/2 lb. **99¢**

Anniversary Sale of Fresh Bakery Buys!

Gourmet

**Loaf Pound
Cake**

18 oz. pkg. **49¢**

Nabisco

Ritz Crackers

Barry's Cookies

Chiclete Chip w/ Butter

Weston Cookies

Hydrex or Onkik Cream

Sunshine Cookies

3 boxes 98¢



COFFEE

CHASE & SANBORN OR MAXWELL HOUSE

2 lb. can \$1.19
YOUR CHOICE WHY PAY MORE?

Pancake Mix Shop-Rite 2 lb. box **25¢**
Sweet Peas Green 3 17 oz. cans **55¢**
Cream Corn Shop-Rite 2 16 oz. cans **33¢**
Kernel Corn Whole 2 12 oz. cans **35¢**
Tuna Fish Shop-Rite 4 6 1/2 oz. cans **\$1**
Staley Corn Oil Solid Pack White quart **49¢**
Evap. Milk Shop-Rite 6 tall cans **79¢**
Enriched Flour Shop-Rite 5 lb. bag **43¢**
Marmalade Orange Shop-Rite 6 jars **\$1**
Preserves Strawberry Shop-Rite 2 lb. jar **59¢**
DelGaico, Gloria or Pizze Imported 3 35 oz. cans **89¢**

Facial Tissue Shop-Rite 3 boxes of 400 **55¢**
Soup Mix Shop-Rite 1 box of 3 pks. **29¢**
Scotties White or Colors 4 boxes of 400 **\$1**

FREE! FREE! FREE!

Shop-Rite's Giving Away The Spaghetti . . . Enrico's Giving the Sauce! FREE! Any 1-pound package of Shop-Rite Brand, Nos. 8, 9, or 35.

With purchase of a 25-ounce jar Enrico's With Meat or Mushroom.

Spaghetti Sauce

Get 'em both for only **69¢**

Tuna Fish Star Kist 3 6 1/2 oz. cans **\$1**
Yuban Coffee Rich Flavor lb. can **72¢**
Tomato Soup Shop-Rite 4 10 1/2 oz. cans **39¢**

HOLLAND DUTCH TREAT

ICE CREAM

POPULAR FLAVORS

49¢

**Our Present to You . . . Terrific
Savings on Produce!**

Idaho **Potatoes** Baking 5 lb. cello **39¢**
California **Iceberg Lettuce** large head **15¢**
Florida **Crisp Celery** large stalk **15¢**
New Cabbage Florida 10¢ Crisp Chicory Florida 12¢
Crisp Escarole Florida 12¢ Sweet Potatoes Golden 9¢

Up and down the state of New Jersey . . . in every city, town and hamlet . . . anywhere and everywhere there's a Shop-Rite Super Market the great celebration is on! It's Shop-Rite's 10th Anniversary and we're mighty proud of our decade of loyal service to our customers. Just 10 years ago we were just a handful of members strong. Today our 100th member is on the brink of joining Shop-Rite. Ten years ago we set out to build a new way to sell—of passing our savings on to the consumer so that there would be "more for all."

Fabulous Meat Values!

U.S. GOVERNMENT GRADED CHOICE

ROUND ROAST
BOTTOM TOP
lb. **79¢** lb. **89¢**

Grade A, Ready-to-Cook

DUCKS Long Island lb. **39¢**

Top Sirloin Roast Tasty lb. **99¢**
Chuck Pot Roast Boneless lb. **75¢**
Chuck Steaks Flavorful lb. **55¢**
Rib Steaks Well Trimmed lb. **69¢**
Shoulder Steaks Tender lb. **99¢**
Fresh Ground Chuck Lean lb. **69¢**
Neck Soup Beef Bone-In lb. **39¢**
End Cut Pork Chops lb. **39¢**
Boneless Pork Roast lb. **69¢**
Shoulder Lamb Chops Tasty lb. **79¢**
Neck of Lamb Flavorful lb. **29¢**
Lamb Shanks For Braising or Stew lb. **35¢**
Lamb Patties Delicious lb. **39¢**
Cubed Veal Cutlets Tender lb. **99¢**
Italian Sausage Hot or Sweet lb. **69¢**
Smoked Tongues Weizsteins lb. **49¢**

Lenten Specials

Smelts Flavorful lb. **23¢**
Halibut Steaks Delicious lb. **49¢**
Shrimp Tender 2 lb. **\$1.29**
Shrimp Flavorful 5 lb. **\$2.29**
Swordfish Steaks Tasty lb. **69¢**

NEW STORE HOURS

Monday 9-9

Thursday 9-9

Tuesday 9-9

Friday 9-10

Wednesday 9-6

Saturday 8-6

**ROYAL SHOP-RITE 169 WASHINGTON AVE.,
BELLEVILLE**